



ARIYA



[Introduction](#) | [Exterior design](#) | [Interior design](#) | [Technology & Performance](#) | [Style & Accessories](#) | [Personnalisation](#)

[Print](#) | [Close](#)





**320kW**  
drive

**5.0s**  
0 to 60mph

**600Nm**  
torque



**nismo**

## ARIYA NISMO. DEFY ORDINARY

**Class-leading electric performance**  
ARIYA NISMO is the apex of the ARIYA lineup - with 320 kW of EV power for 600 Nm of torque, and a tuned e-4ORCE All-Wheel Drive technology. Reach the next level of Pure Thrill with the perfected ARIYA NISMO.

**Unique NISMO design**  
From the NISMO emblem, unique seats and signature red accents to the iconic twin diffuser, 20" Enkei alloys and ANDON interior illumination, ARIYA NISMO is poised and eye-catchingly distinctive.

**Dynamic driving. Sharp handling.**  
Improved springs and dampers and a new stabiliser bar mean more dynamic suspension, while increased aero downforce makes every drive more thrilling.

Visit the NISMO  
web page

DISCOVER NOW

[Introduction](#) | [Exterior design](#) | [Interior design](#) | [Technology & Performance](#) | [Style & Accessories](#) | [Personnalisation](#)

[Page 1](#) | [Page 2](#) | [Page 3](#)

[Print](#) | [Close](#)





## The refined 100% Electric Crossover. An exhilarating electric experience

Electricity can still enlighten us more. The Nissan ARIYA brings you into the future right now, with the highest level of Nissan performance, design and technology. ARIYA is also about fitting into your life, offering many choices including battery capacity, range and two-wheel or all-wheel drive – so you can enjoy next-level control and confidence.

[Introduction](#) | [Exterior design](#) | [Interior design](#) | [Technology & Performance](#) | [Style & Accessories](#) | [Personnalisation](#)

[Print](#) | [Close](#)

[Page 1](#) | [Page 2](#) | [Page 3](#)





## Your intelligent, connected, intuitive drive

Step into the world of ARIYA, and you'll never want to look back. More than a refined 100% Electric Crossover, ARIYA embraces excitement, comfort and relaxation.

### **Power, redefined**

Drive smoothly and quietly with electric power on tap. Go the distance with ARIYA's range capacity, and go confidently, thanks to e-4ORCE, a unique new all-wheel drive system that takes EV capability to new heights.

### **Connectivity, recharged**

Command your digital world - your compatible devices and smart home - using your voice. Swipe your navigation to have it in front of your eyes, or touch the ARIYA's subtle yet elegant controls with haptic feedback. ARIYA invites you to interact with your vehicle in a whole new way.

### **Assistance, enhanced**

Driving should have always been this easy. Relax, and let ARIYA assist you through stop and-go traffic, around slight curves, and even staying in lane. Or sit back and let ARIYA take you into your next parking space. This is what it's like to have great technology on your side.



You should not rely solely on driver convenience features. Some features may not work in all conditions and circumstances. Speed and other limitations apply.  
For terms and conditions relating to Nissan technologies, please contact your Nissan dealer or [www.nissan.xx](http://www.nissan.xx)  
Features available depending on version, as standard or only as option (at an extra charge).

[Introduction](#) | [Exterior design](#) | [Interior design](#) | [Technology & Performance](#) | [Style & Accessories](#) | [Personnalisation](#)

[Page 1](#) | [Page 2](#) | [Page 3](#)

[Print](#) | [Close](#)





## Let your ARIYA stun the world

Wow them with super-thin LED headlamps and signature light blades – futuristic details that are mirrored on the inside with ambient lighting and switches that glow to life. Intricate Japanese Kumiko patterns on the front grille and door inserts, show that tradition can also inspire the future.



### A welcoming start

ARIYA welcomes you from the start with the memory seat function<sup>(1)</sup>, Memory Steering Wheel and exterior mirrors. Feel at ease right before stepping into your car.



### Light & shadow

A traditional Japanese Kumiko pattern signature is incorporated in several elements of the car. In the interior door inserts, it plays between light and shadow with andon lighting, a traditional Japanese technique that provides a calming, welcoming ambience.



### Haptic Touch

The Japanese concept of sei, or "clever treatment of design or function" is represented by haptic controls that provide a tactile response.



### 20" Alloy Wheels<sup>(1)</sup> with aero cover

Leave an impression with this striking wheel insert.

<sup>(1)</sup> Feature available depending on version, as standard or only as option (at an extra charge).





### Go zen with Japanese inspired design

With a flat floor and a relaxing, open vibe, this is a completely new type of car interior. It's also a perfectly executed paradox – while ARIYA's design offers a sleek compact exterior, inside, its cabin is one of the most spacious in its class. The Zero Gravity front seats are supportive enough for spirited, high-performance EV driving, yet comfortable enough to spend more than a few minutes of downtime in them.

### Open up your possibilities

True to its crossover status, ARIYA is designed to make room for whatever is on the agenda. Even with a full house, the generous cargo area can easily handle luggage for a weekend getaway. For the most cargo space, simply fold down the second row. And when it's time to get messy, use Nissan's Full boot Protection to protect your boot against spills and mud. One more trick, in case your hands are full – an easy kick under the bumper and the hands-free power tailgate<sup>(1)</sup> opens right up.



UP TO  
**468L**  
(without folding seats)

Up to 415L for  
e-4ORCE

Flexible boot  
Organiser

Hands-free  
Power Tailgate<sup>(1)</sup>

<sup>(1)</sup> Feature available depending on version, as standard or only as option (at an extra charge).







## Technology that plugs into your senses

Chances are, you've never experienced anything quite like ARIYA. Instead of traditional buttons the controls light up when pressed, react with haptic feedback, then dim afterward, almost disappearing into ARIYA's serenely designed interior. The Integrated Display Interface features dual 12.3" screens that are breathtaking to see and simple to use. Communication is seamless, thanks to next-generation Intelligent personal assistance technology<sup>(1)</sup>. And with the Intelligent Route Planner<sup>(1)</sup>, you can stay on course and on schedule.

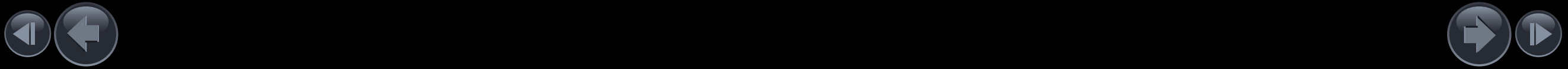
- |                       |                              |   |  |  |
|-----------------------|------------------------------|---|--|--|
| Haptic touch controls | Integrated display interface | Intelligent personal assistance technology <sup>(1)</sup> | Intelligent route planner <sup>(1)</sup> | Wireless mobile charging <sup>(1)(2)</sup> |
|-----------------------|------------------------------|---|--|--|

(1)Features available depending on version, as standard or only as option (at an extra charge).  
(2)Designed to the Qi charging standard & optimised for Qi certified devices.  
To use the NissanConnect services you need a NissanConnect user account and have to register and log into NissanConnect Services app with your username and password. To use the free NissanConnect Services App, you need a smartphone with a compatible iOS or Android operating system and a SIM card with data option with an existing or separate mobile phone contract between you and your mobile service provider. All services are subject to mobile network coverage.



## Drive, work, just relax — it's up to you

Adapt the ARIYA's unique interior to your needs. Push a button and watch its power-sliding center console<sup>(1)</sup> move backwards and forwards to personalise your space. ARIYA can even save your settings, and those of additional drivers, for even more convenience. Add an EV platform that offers a completely flat floor design for a lounge-like interior, and ARIYA's cabin is the perfect space for precious "me time". Need a charge?<sup>(1)(2)</sup> Wireless charging for your compatible smartphone keeps your cabin tidy and your phone topped-up on the go.





## Create your own digital landscape



**INTEGRATED DISPLAY INTERFACE.** The dual dynamic 12.3" screen displays form a single horizon. Arrange your display and personalise to your preference with music, maps, and more.

**HEAD-UP DISPLAY<sup>(1)(2)</sup>** This intuitive display positions vital information within your line of sight – your current speed, the speed limit, and your upcoming turn hover over the road



**INTELLIGENT ROUTE PLANNER<sup>(3)</sup>** Send the destination to your ARIYA ahead of time so you'll be ready to go when you get in. Available on the NissanConnect Services smartphone app, Intelligent Route Planner is a great way to get an idea of what your route might look like before you travel. The Infotainment system ensures the route is calculated and can guide you to charging spots along the way and show details on availability before you arrive.

<sup>(1)</sup> Feature available depending on version, as standard or only as option (at an extra charge).

<sup>(2)</sup> Head-up unit is a convenient feature that displays key information on the windscreen, so that you can have them in view while maintaining your full attention on the road.

To use the NissanConnect Services you need a NissanConnect user account and have to register and log in to NissanConnect with your username and password. To use the free Nissan Connect App, you need a smartphone with a compatible iOS or Android operating system and a SIM card with data option with an existing or separate mobile phone contract between you and your mobile service provider. All services are subject to mobile network coverage. The use of NissanConnect on-board internet is made possible via an integrated wireless internet connection. Data packets are to be obtained via selected external mobile communication providers in accordance with their terms and conditions (depending on the availability in your country). For further information, please visit [www.XXXXX](http://www.XXXXX) and your Nissan Dealer.

## Let ARIYA simplify your life

ARIYA is your partner as you explore the world, with connected tech that advances and simplifies your driving experience. The power of speech means you can say "Hello Nissan", and ARIYA responds to your request. Your smart home and ARIYA can also have a seamless conversation. And customizable displays let you personalize your digital touchpoints for your own journey.



### ALEXA COMPATIBILITY<sup>(1)(4)(7)</sup>

Use NissanConnect Services car capabilities to manage your vehicle remotely by voice command from the comfort of your home.

### ALEXA BUILT-IN<sup>(1)(3)(7)</sup>

Use your smart home devices, listen to your playlists via Amazon Music and do on-the-spot shopping.



### NISSAN VOICE CONTROL<sup>(1)(3)</sup>

Say "Hello Nissan" to make a call, send text messages, change the radio or set a destination.



### IN-CAR WIFI<sup>(1)(5)</sup>

Turn your car into a Wi-Fi hotspot® for the ultimate on-road connectivity experience.



### APPLE CARPLAY® & ANDROID AUTO™<sup>(1)(6)</sup>

Mirror your favourite app on your car touchscreen.

For optimal use, we recommend to use the genuine manufacturer cable.

<sup>(3)</sup> Intelligent Route Planner, Alexa Built-in and Voice Control are available free of charge for a period of 3 years and then available for a fee depending on model and/or grade. For more information, please contact your Nissan dealer or [phone number/e-mail address].

<sup>(4)</sup> Free services, (Driving History & Analysis, Nissan Help & Assistance, Breakdown Assistance) are available free of charge for a period of 7 years, depending on model and/or grade. For more information, please contact your Nissan dealer or [phone number/e-mail address].

<sup>(5)</sup> In-Car WiFi is always a paid service available on subscription. For more information, please contact your Nissan dealer or [phone number/e-mail address].

<sup>(6)</sup> Apple CarPlay® and Android Auto™ are available free of charge, depending on model and/or grade. For more information, please contact your Nissan dealer or [phone number/e-mail address].

<sup>(7)</sup> The feature responsiveness and use can be impacted when car is receiving a bad signal. For optimal use, please make sure your car is under good network coverage. Connecting a mobile phone to use NissanConnect should only be done when the car is parked safely. Use of the system should always be in accordance with the rules of The Highway Code. Drivers should only use the system when it is safe to do so. Users should be aware of the potential for hands-free technology to distract attention from the road, which could impact on having full control of the vehicle.

Apple CarPlay is trademark of Apple Inc., registered in the U.S. and other countries. Android Auto and the Android Auto logo are trademarks of Google LLC. Amazon, Alexa and all related marks are trademarks of Amazon.com, inc. or its affiliates.



## e-4ORCE

DUAL MOTOR ALL-WHEEL DRIVE

Reinvent the all-wheel drive experience. Now 100% electric.

ARIYA's e-4ORCE<sup>(1)</sup> dual-motor All-Wheel Drive powertrain offers more than just an awe-inspiring driving experience. It combines a balanced, smooth ride with stable dynamics reduced pitching on the road and increased passenger comfort, especially in stop start city driving.

Movement is effortless. Power, seemingly limitless. Press the accelerator, and e-4ORCE responds astonishingly, propelling ARIYA up to speed with remarkable force and poise. Need to get through bad weather? e-4ORCE precisely meters out power to each of its wheels, individually, so you can navigate slippery roads with more confidence.

Dual motors, placed front and rear create perfect 50/50<sup>(2)</sup> weight distribution. Each produces up to 300 Nm of torque for instant acceleration and balanced power delivery to all four wheels. With the addition of individually controlled braking for each wheel e-4ORCE All-Wheel Drive offers seamless and controlled power for stability, enhanced cornering and an electric drive.



## Driving modes

ARIYA comes with up to 5 driving modes to deliver the best performance in any situation.

IN A 2 WHEEL DRIVE CONFIGURATION,  
3 DRIVING MODES ARE AVAILABLE:



### STANDARD

Enjoy the perfect balance of responsive performance and efficient driving – ideal for all your day to day journeys.



### ECO

Go lightly, with softer acceleration for better economy and zero emissions. ECO mode is ideal for longer adventures.



### SPORT

Feel the surge of exciting performance, with powerful acceleration for a more dynamic drive.

WITH E-4ORCE, AN ADDITIONAL DRIVING MODE  
IS AVAILABLE:



### SNOW

Stay confident and in-control in the winter, with smooth acceleration from take-off for assured grip in snow and slippery conditions

ARIYA NISMO COMES WITH THE EXCLUSIVE  
NISMO DRIVING MODE:



### NISMO

Experience strong response and exhilarating acceleration with the NISMO mode, and reach the ultimate level of ARIYA performance.

(1) Features available depending on version, as standard or only as option (at an extra charge).

(2) 40/60 weight distribution for ARIYA NISMO

You should not rely solely on driver convenience features. Some features may not work in all conditions and circumstances. Speed and other limitations apply. For terms and conditions relating to Nissan technologies, please contact your Nissan dealer or [www.nissan.xx](http://www.nissan.xx)



# Safety that watches out for you

ARIYA has been designed to protect you with advanced safety technologies. Systems that watch the road, alert you to hazards and can even step in to help avoid or reduce the impact of a collision.



**INTELLIGENT 360° AROUND VIEW MONITOR**  
Provides a virtual 360-degree scene of the car in bird's-eye view to facilitate manoeuvring. It detects moving objects in the surroundings for stress-free and confident driving.



**INTELLIGENT FORWARD COLLISION WARNING**  
This system detects a braking car 2 vehicles ahead to prevent from multi-car accident by raising an alert.



**INTELLIGENT BLIND SPOT INTERVENTION**  
Boost your vision: the system will warn you if there are vehicles in the blind spots diagonally behind the car and will apply corrective braking to bring the vehicle back into the lane if you attempt to move into the path of a detected vehicle.



**INTELLIGENT REAR VIEW MIRROR**  
The Intelligent Rear View Mirror system allows you to digitally see what is happening behind the car thanks to a built-in LCD monitor in the central mirror.



**INTELLIGENT EMERGENCY BRAKING WITH JUNCTION ASSIST, PEDESTRIAN AND CYCLIST RECOGNITION**  
Monitors constantly the presence of vehicles, cyclists, or pedestrians in your way. The system warns the driver and applies brakes if there is any danger ahead and if it is necessary. Junction Assist improves safety at intersections by reducing the risk of collision with upcoming traffic.



**REAR AUTOMATIC BRAKING**  
The system detects static objects and obstacles in reversing scenes and brakes if necessary to reduce the chance of a collision.

*You should not rely solely on driver convenience features. Some features may not work in all conditions and circumstances. Speed and other limitations apply. For terms and conditions relating to Nissan technologies, please contact your Nissan dealer or [www.nissan.xx](http://www.nissan.xx)*



Nissan ARIYA, with its suite of active and passive safety technologies, has achieved a 5 star Euro NCAP safety rating.







## With ProPILOT Assist, you're in safe hands



**ProPILOT Assist with Navi-link<sup>(1)</sup>**. In addition to following the flow of traffic, ProPILOT Assist with Navi-link<sup>(1)</sup> helps keep you centred in your lane, even through gentle curves. By linking with the navigation system, it can also anticipate what's ahead – sensing speed limit changes to adjust your drive accordingly and exit slip roads to help slow you down as you leave the motorway.



**ProPILOT Park<sup>(2)</sup>**. Tight parking space? Push the ProPILOT Park button<sup>(2)</sup> and ARIYA will take over steering, accelerator, brakes and drive. Watch as ARIYA glides right into the spot – whether it's reverse or parallel.



**e-Pedal Step**. Experience a more intuitive way to drive. e-Pedal Step lets you choose, with the option to accelerate and decelerate effectively with just the accelerator pedal. Meanwhile leaving the brake pedal for harder braking and coming to a complete stop.

(1) ProPILOT Assist is available on a limited range of vehicles. ProPILOT Assist is an Advanced Driver Assist technology but cannot prevent collisions. ProPILOT Assist is intended for "Eyes on/ Hands On" for highways only (road separated by barriers). Navi-Link supports traffic sign recognition which may not detect and read all traffic signs in all conditions. Driver should monitor all traffic signs and obey traffic laws. It is the driver's responsibility to stay alert, drive safely and remain in control of the vehicle at any time. For details, please check the Owner's Manual.

(2) Feature available depending on version, as standard or only as option (at an extra charge).

You should not rely solely on driver convenience features. Some features may not work in all conditions and circumstances. Speed and other limitations apply. For terms and conditions relating to Nissan technologies, please contact your Nissan dealer or [www.nissan.xx](http://www.nissan.xx)



Go there with confidence

This refined 100% Electric Crossover may be brand new, but ARIYA is infused with Nissan's long history of know-how in EV development. Spend more time on the road with advanced battery technology that allows fast charging, and go wherever the road takes you, with a Europe-wide network of charging stations. Whether you choose two-wheel drive or e-4ORCE all-wheel drive, charge up and explore freely.



CHARGE SMART

Schedule your home charging from your smartphone and choose times when electricity rates are lower. With the NissanConnect Services app, you can set charging to start while you sleep, then wake up to a fully charged ARIYA, ready to go.

CHARGE AT HOME

With a dedicated 240-volt wall charger, you can plug into the easy life and wave goodbye to the gas pump. You can also plug your car into the wall from a domestic home socket, just like a laptop or any other device, and the battery will top-up as required. If your property has a 3-phase electricity supply<sup>(1)</sup>, ARIYA with the 22kW on-board charger can be charged at the maximum permitted supply of the electricity grid provider through a high power wallbox option. This increases charging speed from standard 7kW charging at up to 10miles (of range) per hour to 60 miles (of range) per hour for 22kW charging<sup>(1)</sup>.

<sup>(1)</sup>Please check with your local electricity provider to see what's available in your area.

	Battery charge (10-100%) in as little as		
	Wallbox 22kW	Wallbox 7.4kW	Domestic Plug 2.3kW
63kWh	3,5h	10h	34,5h
87kWh	5h	13,5h	48h

CHARGE ON THE GO

Hit the road with a wide range of charging options on the way. Plug into CCS high power chargers getting up to DC 130 kW (400V, 325A) at more than 16,000 locations across Europe and enjoy 20%-80% battery charge in as little as 30 minutes<sup>(2)</sup>.

INTELLIGENT ROUTE PLANNER

Intelligent Route Planner will also guide you to one of those charging points with most efficient routes & chargers on the way to your final destination<sup>(3)</sup>.



NISSAN CHARGE APP

Get Nissan Charge App to access our network of more than 950,000 public charging points across Europe.



Scan the QR code to download the App



Ready to charge on the go. Download the App, sign in, register your payment method and activate your Nissan Charge key. To begin charging, just tap the Nissan Charge key on the charger.



Access charger info with no surprises. Reliable and accurate info (charger type, availability and price) at a glance.



Charge anywhere with just one app. Experience one of Europe's largest charging networks with Nissan Charge.

<sup>(2)</sup> Figures quoted are for 63kWh and 87kWh batteries. Charging speed and time is dependent on various conditions, including charger type and condition, battery temperature as well as ambient temperature at the point of use. In cold climates, the use of on-board battery heating may be required to specifically improve quick charging speeds. Indicated quick charging time requires use of a CCS 2 charger. The Nissan ARIYA is equipped with charging safeguards to protect the battery during repeated quick charging sessions in a short period of time. The time taken for successive quick charging can take longer if the battery temperature activates the battery safeguarding technology.

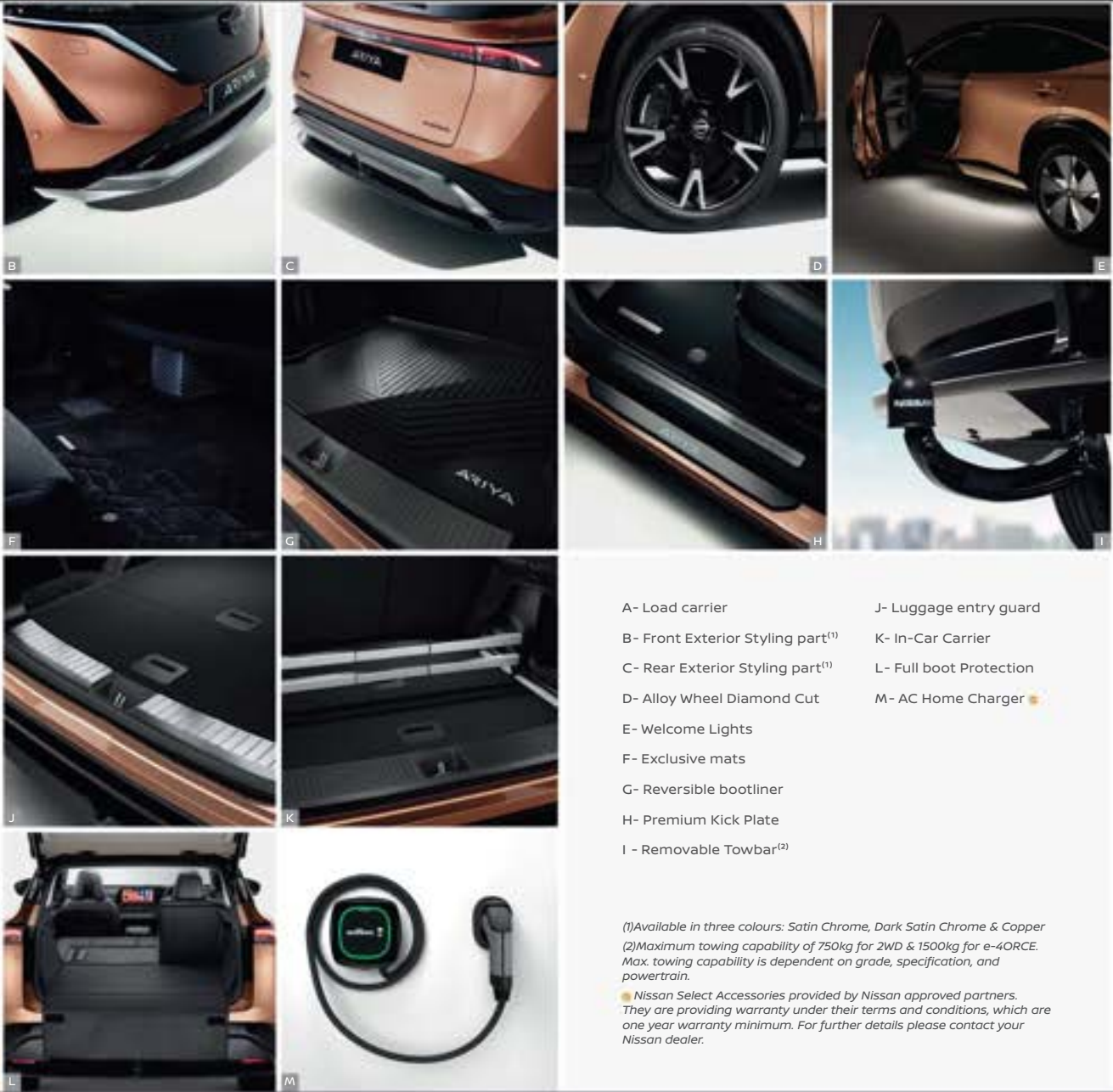
<sup>(3)</sup> To use the NissanConnect Services you need a NissanConnect user account and have to register and log into NissanConnect Services app with your username and password. To use the free NissanConnect Services App, you need a smartphone with a compatible iOS or Android operating system and a SIM card with data option with an existing or separate mobile phone contract between you and your mobile service provider. All services are subject to mobile network coverage. Services may feature a free period, but will require paid subscription when this free of charge period elapses.





More comfortable.  
More capable. More you

Choose from a wide range of accessories to enhance your style and protect ARIYA. From Towbar to Styling items, Exclusive Mats and much more to emphasise ARIYA unique design and even more extend a luxury feeling.



- A- Load carrier
- B- Front Exterior Styling part<sup>(1)</sup>
- C- Rear Exterior Styling part<sup>(1)</sup>
- D- Alloy Wheel Diamond Cut
- E- Welcome Lights
- F- Exclusive mats
- G- Reversible bootliner
- H- Premium Kick Plate
- I - Removable Towbar<sup>(2)</sup>
- J- Luggage entry guard
- K- In-Car Carrier
- L- Full boot Protection
- M- AC Home Charger

<sup>(1)</sup>Available in three colours: Satin Chrome, Dark Satin Chrome & Copper  
<sup>(2)</sup>Maximum towing capability of 750kg for 2WD & 1500kg for e-4ORCE. Max. towing capability is dependent on grade, specification, and powertrain.  
Nissan Select Accessories provided by Nissan approved partners. They are providing warranty under their terms and conditions, which are one year warranty minimum. For further details please contact your Nissan dealer.

### Service Contracts

Give your Nissan ARIYA the care it deserves with a Nissan Service Contract\* and save money in the long run. Nissan Maintenance Contract covers all the scheduled operations recommended by Nissan and specified in the owner's manual & warranty booklet. Maintenance Contract allows you to know from the start how much your maintenance will cost and protects you against price inflation. In addition to the scheduled operations, you can benefit from the replacement of wear and tear parts such as wiper blades or brake pads by subscribing to a Full Maintenance Contract. Select the duration that covers your needs and benefit from the use of Nissan Genuine Parts fitted by our trained technicians, at a discounted price. A well maintained vehicle has a greater resale value. If you sell your Nissan before your contract expires, the Service Contract will be transferred to the new owner. So do not wait any longer and subscribe to a Nissan Service Contract for extra peace of mind!

### Extended Warranty

Nissan Extended Warranty gives you the opportunity to extend the 3 Years/60,000 miles warranty for a longer period or mileage. Select the contract that best suits your driving usage. In case of a repair, only Nissan genuine parts will be used and fitted by Nissan trained technicians.

FOR MORE INFORMATION CONTACT  
YOUR NISSAN DEALER OR REPAIRER

\* Will vary/ depend on markets where ARIYA is sold



Four unique versions of ARIYA that totally transform driving

The beauty of ARIYA is more than skin deep. It is a refined 100% Electric Crossover that is available in three distinct personalities. Whether you crave driving excitement, adventure-worthy capability, or long-haul range, or something in-between, there is an ARIYA for you.

2 WHEEL DRIVE

ARIYA 63 kWh

Battery size	63 kWh
WLTP combined range <sup>(1)</sup>	Up to 250 miles
Acceleration 0-60 mph and top speed	7.5 s - 60mph
Power and torque	160 kW - 300 Nm
Electricity consumption WLTP combined cycle	17.6 kWh / 60 miles
Peak Charging Power <sup>(2)</sup>	AC 7.4 kW /DC 130 kW

AVAILABLE FOR ENGAGE, ADVANCE

ARIYA 87 kWh

Battery size	87 kWh
WLTP combined range <sup>(1)</sup>	Up to 329 miles
Acceleration 0-60 mph and top speed	7.6 s - 60mph
Power and torque	178 kW - 300 Nm
Electricity consumption WLTP combined cycle	18.1 kWh / 60 miles
Peak Charging Power <sup>(2)</sup>	AC 7.4 kW (optional 22 kW) /DC 130 kW

AVAILABLE FOR ADVANCE, EVOLVE

ALL-WHEEL DRIVE DUAL MOTOR

ARIYA e-4ORCE 87 kWh

Battery size	87 kWh
WLTP combined range <sup>(1)</sup>	Up to 310 miles
Acceleration 0-60 mph and top speed	5.7 s - 124 mph
Power and torque	225 kW - 600 Nm
Electricity consumption WLTP combined cycle	19.7 kWh / 60 miles
Peak Charging Power <sup>(2)</sup>	AC 7.4 kW (optional 22 kW) /DC 130 kW

AVAILABLE FOR EVOLVE

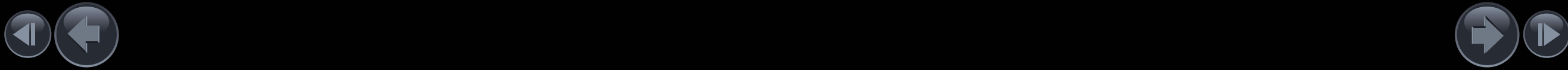
ARIYA NISMO

Battery size	87 kWh
WLTP combined range <sup>(1)</sup>	Up to 261 miles
Acceleration 0-60mph and top speed	5.0 s - 124 mph
Power and torque	320 kW - 600 Nm
Electricity consumption WLTP combined cycle	24.5 kWh / 60 miles
Peak Charging Power <sup>(2)</sup>	22 kW STD /DC 130 kW

AVAILABLE FOR NISMO

(1)Figures were determined under the new Worldwide harmonized Light Vehicles Test Procedure (WLTP) test cycle.WLTP figures shown are for comparability purposes. Actual real world driving results may vary depending on factors such as the starting charge of the battery, accessories fitted after registration, weather conditions, driving styles and vehicle load.

(2)Figures quoted are for 63kWh and 87kWh batteries. Charging speed and time is dependent on various conditions, including charger type and condition, battery temperature as well as ambient temperature at the point of use. In cold climates, the use of on-board battery heating may be required to specifically improve quick charging speeds. Indicated quick charging time requires use of a CCS 2 charger. The Nissan ARIYA is equipped with charging safeguards to protect the battery during repeated quick charging sessions in a short period of time. The time taken for successive quick charging can take longer if the battery temperature activates the battery safeguarding technology.





# Choose ARIYA in a spectrum of sophisticated shades

With a choice of 9 colours, including four two-tone shades, you can choose the ARIYA which matches your style. The iconic pearl black roof gives ARIYA even more presence, poise and attitude every time you hit the streets. Enjoy exclusive design with ARIYA NISMO available in available in Stealth Grey paint and with sporty red finishings and with sporty red finishings.

## COLOUR PALETTE

### ONE TONE



S: Solid - M: Metallic - P: Pearl



Gun Metallic -M- KAD



Pearl Black -P- GAT



Ceramic Grey -P- KBY



Aurora Green -M- DAP



White Pearl -P- QBE  
«Shiro» Edition only

### TWO TONE



Akatsuki Copper -M- XGJ



White Pearl -P- XGA



Blue Pearl -P- XGU

## NISMO WITH RED FINISHINGS

### TWO TONE



Stealth Grey -S- YAZ

## WHEELS

19" ALLOY WHEELS  
WITH AEROCOVER  
ENGAGE / ADVANCE / EVOLVE



20" ALLOY WHEELS  
WITH AEROCOVER  
(OPTIONAL ON ADVANCE EVOLVE)



## NISMO

ENKEI "MAT PROCESS" 20"  
NISMO WHEELS W/ MICHELIN  
SPORT EV



## SEATS

BLACK  
CLOTH (FABRIC)  
ENGAGE



BLACK PART PVC  
/CLOTH (FABRIC)  
ADVANCE



BLACK PART PVC  
/SYNTHETIC SUEDE  
EVOLVE



LIGHT GREY PART PVC  
/SYNTHETIC SUEDE  
(OPTIONAL ON EVOLVE)



BLUE  
NAPPA LEATHER  
(OPTIONAL ON EVOLVE)



BLACK PART PVC WITH RED STITCHING/  
SYNTHETIC SUEDE WITH RED PERFORATION AND  
EMBROIDERED NISMO LOGO



Choose your ARIYA

Standard specifications per grade.

ENGAGE	
EXTERIOR	
<ul style="list-style-type: none"><li>- LED headlamps with automatic on/off</li><li>- LED Day Time Running Lamp with follow me home feature</li><li>- LED rear fog lamps</li><li>- LED tail lamp</li><li>- High-Beam Assist</li></ul>	<ul style="list-style-type: none"><li>- Chrome window mouldings</li><li>- Automatic folding heated mirrors</li><li>- Shark Fin Antenna</li><li>- 19" alloy wheels with aerocover</li></ul>
INTERIOR PERSONALISATION	
<ul style="list-style-type: none"><li>- Black Cloth (Fabric) seats</li></ul>	
COMFORT	
<ul style="list-style-type: none"><li>- Drive modes</li><li>- Front and rear parking sensors</li><li>- Rain sensing wipers</li><li>- Dual zone automatic climate control and rear air vents</li><li>- Andon illumination (footwell + front doors)</li><li>- DAB and audio system with 6 speakers</li><li>- Bluetooth® (phone and audio streaming)</li><li>- USB Type-C (front and rear)</li><li>- Front 12V power socket</li><li>- Seat back pockets and rear armrest</li></ul>	<ul style="list-style-type: none"><li>- 60/40 split folding rear seat Luggage board and tonneau cover storage in the boot</li><li>- Center storage</li><li>- Leather steering wheel</li><li>- Power one touch windows</li><li>- 6-way manually adjustable front seats</li><li>- Steering wheel tilt and telescopic</li></ul>
TECHNOLOGY	
<ul style="list-style-type: none"><li>- Dual 12.3" TFT screens with meter display and navigation</li><li>- e-Pedal Step</li><li>- Wireless Apple Carplay and Android Auto</li><li>- Nissan Voice Control</li><li>- Alexa Built-in</li></ul>	<ul style="list-style-type: none"><li>- Firmware Over The Air capability</li><li>- Telematics: Remote Services &amp; notifications + Connectivity Services</li><li>- Automatic dimming and frameless mirror</li><li>- Intelligent Key</li><li>- Rear view camera</li></ul>
SAFETY	
<ul style="list-style-type: none"><li>- Front airbags + side, curtain, farside</li><li>- Intelligent Emergency Braking with Pedestrian Recognition, cyclist detection and junction assist</li><li>- Intelligent Forward Collision Warning</li><li>- Intelligent Driver Alertness</li><li>- Intelligent Cruise Control</li><li>- Intelligent Lane Intervention</li></ul>	<ul style="list-style-type: none"><li>- Blind Spot Warning and Intelligent Blind Spot Intervention</li><li>- Rear Emergency Break and cross traffic alert</li><li>- Electronic-parking brake with autohold</li><li>- Safety and anti-theft protection with car alarm</li><li>- Traffic-Sign Recognition</li></ul>
CHARGING	
<ul style="list-style-type: none"><li>- Charging cable EVSE Mode 2 10A</li><li>- Charging cable Mode 3 32A</li></ul>	<ul style="list-style-type: none"><li>- 7.4kW onboard charger</li><li>- Heat pump</li></ul>

ADVANCE (ADDITIONAL TO ENGAGE)	
EXTERIOR	
<ul style="list-style-type: none"><li>- LED Front and rear fog lamps</li><li>- e-4ORCE kicking plates and badge <sup>(1)</sup></li><li>- Rear privacy glass</li><li>- Super UV and Infrared cut glass</li></ul>	
INTERIOR PERSONALISATION	
<ul style="list-style-type: none"><li>- Black Part PVC/Cloth (Fabric) seats</li></ul>	
COMFORT	
<ul style="list-style-type: none"><li>- Plasma Cluster Ion Air Purifier</li><li>- Heated steering wheel</li><li>- Heated front seats</li><li>- Driver lumbar support</li></ul>	<ul style="list-style-type: none"><li>- Power driver and passenger 6-way seats</li><li>- Power hands-free tail-gate</li><li>- Heated front windscreen</li></ul>
TECHNOLOGY	
<ul style="list-style-type: none"><li>- Wireless phone charger</li></ul>	<ul style="list-style-type: none"><li>- Intelligent 360° Around View Monitor</li></ul>
SAFETY	
<ul style="list-style-type: none"><li>- Traffic Jam Pilot</li><li>- Lane Keep Assist</li></ul>	<ul style="list-style-type: none"><li>- ProPILOT Assist with Navi-Link</li></ul>
OPTION PACKS	
<b>SKY PACK</b> <ul style="list-style-type: none"><li>- Openable panoramic sunroof</li></ul>	

EVOLVE (ADDITIONAL TO ADVANCE)	
EXTERIOR	
<ul style="list-style-type: none"><li>- Adaptive driving beam and auto levelizer</li><li>- Front and rear sequential turning lights</li><li>- Openable panoramic sunroof</li></ul>	
INTERIOR PERSONALISATION	
<ul style="list-style-type: none"><li>- Black Part PVC/Synthetic Suede seats</li></ul>	
COMFORT	
<ul style="list-style-type: none"><li>- Andon illumination (footwell + front doors' panels) + LED line illumination (front cabin surrounding)</li><li>- DAB and BOSE® 10-speaker sound system</li><li>- Flexible center storage</li><li>- Ventilated (heat and cooled) front seats</li></ul>	<ul style="list-style-type: none"><li>- Heated rear seats</li><li>- Power memory driver and passenger 8-way seats</li><li>- Power memory steering wheel tilt and telescopic</li><li>- Power sliding center console</li><li>- Power memory mirrors with reverse tilt function</li></ul>
TECHNOLOGY	
<ul style="list-style-type: none"><li>- Memory Intelligent Key</li><li>- Intelligent Rear View mirror</li></ul>	<ul style="list-style-type: none"><li>- Head Up Display</li><li>- ProPILOT Park</li></ul>
OPTIONS	
<b>EXTERIOR PERSONALISATION</b> <ul style="list-style-type: none"><li>- 20" alloy wheels with aerocover</li></ul>	<b>INTERIOR PERSONALISATION</b> <ul style="list-style-type: none"><li>- Blue Nappa Leather seats</li><li>- Light Grey Part PVC / Synthetic Suede <sup>(2)</sup></li></ul>

NISMO (ADDITIONAL TO ADVANCE)	
EXTERIOR	
<ul style="list-style-type: none"><li>- NISMO exterior styling kit</li><li>- 20" NISMO alloy wheels w/Michelin Sport EV</li><li>- 4 colour options</li></ul>	
INTERIOR	
<ul style="list-style-type: none"><li>- Black Part PVC with red stitching/Synthetic Suede with red perforation seats</li><li>- Steering wheel and dashboard with red stitching and red metal finisher</li></ul>	
COMFORT	
<ul style="list-style-type: none"><li>- NISMO Andon red illumination (footwell + front doors' panels)</li></ul>	
TECHNOLOGY	
<ul style="list-style-type: none"><li>- Smart rear view mirror</li><li>- Head Up Display</li><li>- Bose® Sound System</li><li>- Interior Line illumination</li></ul>	
CHARGING	
<ul style="list-style-type: none"><li>- 22kW onboard charger</li></ul>	

DIMENSIONS	
<p>A: Overall length: 4595mm</p> <p>B: Wheelbase: 2775mm</p> <p>C: Overall width: 1850mm</p> <p>D: Overall height: 1660mm</p> <p>E: Ground Clearance: 170 - 185mm depending on version</p>	

<sup>(1)</sup> Only for ARIYA e-4ORCE.  
<sup>(2)</sup> Depending on the country, grey interior is either an option (ECB / ITA / SPA) or standard (GER / FRA).





## SUSTAIN ABILITY

Nissan's strategy centers on sustainability, aiming for carbon neutrality by 2050 and achieving a 41.2% reduction in CO<sub>2</sub> emissions from new vehicles compared to 2000. The company plans to electrify all-new vehicle offerings in key markets by the early 2030s.

We are committed to developing driver assistance technologies for safer journeys, with 2.27 million vehicles already equipped with ProPILOT Assist systems. Additionally, Nissan is focused on creating a diverse, equitable, and inclusive workplace.



## 90 YEARS

OF DARING TO DO WHAT OTHERS DON'T.

We have built our heritage on a passion for innovation and electric mobility, from the creation of the first Datsun in 1933 to cutting-edge technologies such as e-POWER and e-4ORCE. We are also committed to achieving carbon neutrality by 2050, reducing road deaths to zero and promoting diversity, equity and inclusion.



## DEFY ORDINARY

Why stick to the beaten path when you can forge your own? It's something we've always done and unites us with those who dare to be different. Those who refuse to settle for the status quo. It means we're continually creating radical new experiences, challenging conventional ways of thinking and shaking up worldviews. We're firm believers that real thrill happens when you take the plunge.

That's why we welcome boldness and fearlessly embrace the unexpected.

That's why we defy ordinary.





Deep dive into the New Nissan ARIYA experience: <https://www.nissan.co.uk/vehicles/new-vehicles/ariya.html>  
Follow Nissan ARIYA on Facebook, Twitter and YouTube.

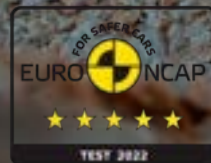
Every effort has been made to ensure that the content of this publication is correct at the time of going to press (July 2025). In accordance with the company's policy of continuously improving its products, Nissan Europe reserves the right to change at any time the specification and the vehicles described and shown in this publication. Nissan dealers will be informed of any such modifications as quickly as possible. Please check with your local Nissan dealer to receive the most up-to-date information. Because of the limitations of the printing processes used, the colours shown in this brochure may differ slightly from the actual colours of the paint and interior trim materials used. All rights reserved. Reproduction in whole or part of this brochure without the written permission of Nissan Europe is forbidden. This brochure is made from chlorine free paper - MY24.5 ARIYA brochure 07/2025 - Printed in EU. Created by DESIGNORY, France and produced by Omnicom Production, France - Tel: +33 1 49 09 25 35.







ARIYA



# STANDARD EQUIPMENT

## NISSAN ARIYA STANDARD SPECIFICATION:

### EXTERIOR:

- LED headlights with auto on/off
- LED Daytime Running Lights
- Follow me home headlights
- LED Rear Fog Lights
- LED Tail Lights
- Heated & auto-folding mirrors
- Shark fin antenna

### COMFORT & CONVENIENCE:

- Automatic dual zone climate control & air conditioning
- Rear air vents
- Leather steering wheel
- Heat pump
- Rain sensing wipers
- Front and rear parking sensors
- Seat back pockets
- Rear armrest
- 60:40 Split folding rear seats
- Drive modes (Sport, Normal, Eco)
- LED ambient lighting
- Luggage board
- One touch front and rear electric windows with remote opening/closing

### SAFETY:

- Intelligent Driver Alertness\*
- Intelligent Blind Spot Intervention\*
- Rear Cross Traffic Alert\*
- Intelligent Speed Assist\*
- Intelligent Lane Intervention\*
- Traffic Sign Recognition
- Intelligent Cruise Control\*
- Intelligent front emergency braking with pedestrian & cyclist recognition and junction assist\*
- Intelligent rear emergency braking with pedestrian recognition\*
- Predictive forward collision warning\*
- Electric parking brake
- Auto hold function
- High Beam Assist
- Adjustable speed limiter
- Car alarm
- Driver, passenger, side, curtain and far-side airbags

### TECHNOLOGY:

- Audio system with DAB
- Full 12.3" TFT Screen
- Navigation 12.3" Screen and associated features
- Telematics: Remote Services, notifications & Connectivity Services^
- Wireless Apple Carplay® (cabled Android Auto®)
- Virtual Personal Assistant & Firmware Over The Air capability
- Bluetooth® with audio streaming
- Front 12V socket
- Front and rear USB connection (Type-A and Type-C)
- Type 2 Charging Cable
- 3-pin EVSE Charging Cable

### OPTIONAL EXTRAS

- Metallic Paint
- Pearlescent Paint
- Two Tone Metallic Paint
- Two Tone Pearlescent Paint

\* It is your responsibility to stay alert, drive safely and be in control of the vehicle at all times. Driver assist features have speed and other limitations and should not be solely relied on. Some features may not work in all conditions and circumstances and may require paid subscription. For more information, please refer to the owner's manual, contact your Nissan dealer or visit [www.nissan.co.uk/techterms](http://www.nissan.co.uk/techterms).

^To use NissanConnect Services you need a smartphone with compatible iOS or Android operating system, and a SIM card with a data option from a mobile service provider. Download the free NissanConnect Services app and create an account. Connect your smartphone with your vehicle equipped with NissanConnect Services by logging in using your username and password. All services are subject to mobile network coverage. NissanConnect Services are free or available for an additional charge on subscription subject to grade. For further information, visit [Nissan.co.uk](http://Nissan.co.uk) or contact your local Nissan Dealer.



# ENGAGE

## IN ADDITION TO STANDARD EQUIPMENT

### EXTERIOR:

- 19" Alloys with aero covers
- Satin Chrome window mouldings

### COMFORT AND CONVENIENCE:

- Frameless rear-view mirror
- Manually adjustable driver and passenger 6-way seats
- Steering wheel with tilt and telescopic manual adjustment
- Graphite upholstery with fabric seats

### TECHNOLOGY:

- Rear view parking assist camera

### CHARGING:

- 63kWh or 87kWh usable capacity battery
- Standard on 63kWh derivative:  
On-board 7.4kW AC Charger
- Standard on 87kWh derivative:  
On-board 22kW AC Charger
- Up to 130kW CCS DC rapid charging rate
- Manual battery pre-conditioning



# SHIRO

## IN ADDITION TO ENGAGE SPECIFICATION

### EXTERIOR:

- Design Pack with front fog lights, super UV and infrared cut glass with rear privacy glass

### TECHNOLOGY:

- ProPILOT Assist pack with Traffic Jam Pilot, Wireless Phone Charger, Intelligent Lane Keep Assist, Traffic sign recognition with Legal Speed Adjustment





# ADVANCE

## IN ADDITION TO ENGAGE SPECIFICATION

### EXTERIOR:

- LED Front Fog Lights
- Super UV and infrared cut glass with rear privacy glass
- Heated front windscreen
- Hands free power tailgate

### COMFORT:

- Heated front seats
- Heated steering wheel with tilt and telescopic manual adjustment
- Black upholstery with synthetic leather seats and graphite fabric inserts
- Power driver and passenger 6-way seats
- Power lumbar support on the driver seat
- Plasma cluster ion air purifier

### SAFETY:

- ProPILOT Assist with Navi-Link\*
- Intelligent Lane Keep Assist\*
- Intelligent Traffic Jam Pilot\*

### TECHNOLOGY:

- 360° digitally enhanced around view monitor with moving object detection
- Wireless phone charger

### CHARGING:

- 63kWh or 87kWh usable capacity battery
- Standard on 63kWh derivative: On-board 7.4kW AC Charger
- Standard on 87kWh derivative: On-board 22kW AC Charger
- Up to 130kW CCS DC rapid charging rate

### OPTIONS:

- Sky Pack: Electric panoramic sunroof

\*It is your responsibility to stay alert, drive safely and be in control of the vehicle at all times. Driver assist features have speed and other limitations and should not be solely relied on. For more information, please refer to the owner's manual or visit [www.nissan.co.uk/techterms](http://www.nissan.co.uk/techterms)



# EVOLVE

## IN ADDITION TO ADVANCE SPECIFICATION

### EXTERIOR:

- Electric panoramic sunroof
- Adaptive Beam Assist
- Advanced sequential turning lights

### COMFORT:

- Intelligent rear view mirror
- Ventilated (heat and cooled) front seats
- Heated rear seats
- Heated steering wheel with tilt and telescopic electric adjustment with memory
- Black upholstery with synthetic leather seats and graphite Ultrasuede® inserts
- Door mirrors with memory function
- Tilting door mirror when reversing
- Power-sliding centre console
- Line illumination
- Power centre storage with table

### TECHNOLOGY:

- 10 Bose® Speakers
- Advanced windscreen head up display
- ProPILOT Park\*\*
- Advanced Intelligent Key memory functions (Seats, Mirrors, Steering Wheel, infotainment settings)

### CHARGING:

- 63kWh or 87kWh usable capacity battery
- Standard on 63kWh derivative: On-board 7.4kW AC Charger
- Standard on 87kWh derivative: On-board 22kW AC Charger
- Up to 130kW CCS DC rapid charging rate

### OPTIONS:

- Blue Nappa leather seats with synthetic leather parts\* and blue upholstery
- Grey upholstery with synthetic leather seats and Ultrasuede® inserts
- Sport Pack: 20" Alloy wheels with aero covers & blue Nappa leather seats with synthetic leather parts\* and blue upholstery

\*Side and back of seats are trimmed with a synthetic alternative to leather.

\*\*It is your responsibility to stay alert, drive safely and be in control of the vehicle at all times. Driver assist features have speed and other limitations and should not be solely relied on. Some features may not work in all conditions and circumstances and may require paid subscription. For more information, please refer to the owner's manual, contact your Nissan dealer or visit [www.nissan.co.uk/techterms](http://www.nissan.co.uk/techterms)



# E-4ORCE

With e-4ORCE technology, dual motors and a unique all-wheel drive technology, ARIYA delivers the perfect balance between powerful & unprecedented control in all conditions. Launch with instant torque at all four wheels. Conquer terrain with all-weather traction. Corner with precise control. And enjoy every minute while ensuring a smooth ride.

## IN ADDITION TO ADVANCE OR EVOLVE SPECIFICATION

### EXTERIOR:

- Front e-4ORCE entry guards
- Rear e-4ORCE badge
- Dark Chrome window mouldings

### TECHNOLOGY:

- Snow Driving Mode

### CHARGING:

- 87kWh usable capacity battery
- Standard: On-board 22kW AC Charger
- Up to 130kW DC rapid charging rate





# COLOURS



AURORA GREEN (DAP)



PEARL BLACK (GAT)



GUN METALLIC (KAD)



CERAMIC GREY (KBY)



PEARL WHITE (QBE)  
EXCLUSIVE TO SHIRO GRADE



AKATSUKI COPPER (XGJ)  
WITH TWO-TONE PEARL BLACK ROOF



WHITE PEARL (XGA)  
WITH TWO-TONE PEARL BLACK ROOF



BLUE PEARL (XGU)  
WITH TWO-TONE PEARL BLACK ROOF

## TRIMS



**ENGAGE & SHIRO:**  
Graphite - Fabric



Standard on **ADVANCE** and **e-4ORCE ADVANCE**



**EVOLVE and e-4ORCE EVOLVE:** Black - Synthetic Leather with graphite Ultrasuede® inserts



Option on **EVOLVE and e-4ORCE EVOLVE:**  
Grey - Synthetic Leather with Ultrasuede® inserts



Option on **EVOLVE and e-4ORCE EVOLVE:**  
Blue - Nappa leather seat fronts with synthetic leather parts\*

\*Side and back of seats are trimmed with a synthetic alternative to leather.

## WHEELS



**ENGAGE, SHIRO, ADVANCE, EVOLVE, E-4ORCE ADVANCE AND E-4ORCE EVOLVE**  
19" ALLOY WHEEL WITH AERO COVER



OPTIONAL ON **EVOLVE AND E-4ORCE EVOLVE**

## DIMENSIONS

- A:** Overall length: 4,595mm  
**B:** Wheelbase: 2,775mm  
**C:** Overall width: 1,850mm  
**D:** Overall height: 1,660mm



## WARRANTY

### Nissan ARIYA offers you:

- 8 years / 100,000 miles warranty on the Nissan ARIYA Lithium-ion battery, protecting against full capacity loss of below 9 bars out of 12 on the ARIYA's capacity gauge.
- 5 years / 60,000 miles warranty on all EV dedicated components and 3 years / 60,000 miles for standard components
- 12 Year anti-corrosion warranty
- 18,000 miles service interval

For full terms and conditions please refer to the owner's manual or speak to your local participating Nissan dealership.



# ARIYA TECHNICAL DATA

		ENGAGE 63kWh	SHIRO 63kWh	ADVANCE 63kWh	EVOLVE 63kWh	ENGAGE 87kWh	ADVANCE 87kWh	EVOLVE 87kWh	e-4ORCE ADVANCE 87kWh	e-4ORCE EVOLVE 87kWh
MODEL										
Engine type		Electric Motor								
Drivetrain		2WD							e-4ORCE 4WD	
Seating Capacity		5								
Overall Length	mm	4,595								
Wheelbase	mm	2,775								
Overall Width excluding mirrors	mm	1,850								
Overall Width including mirrors	mm	2,172								
Overall Height	mm	1,660								
Overhang, front/rear	mm	875 / 945								
Gross Vehicle Weight	kg	1,800 – 2,300								
Turning Circle, kerb to kerb	m	10.8								
Minimum Ground Clearance	mm	165								
Luggage Capacity	L	466							408	

CHASSIS				
Driven wheels		Front		All Wheel Drive
Transmission		Automatic		
Suspension, front		Independent MacPherson strut		
Suspension, rear		Multi-link		
Steering		Electric power assisted		
Brakes, front		Vented discs		
Brakes, rear		Vented discs		
Battery capacity	kWh	63	87	
Wheel size		19 x 7.5 J, Offset 40mm, 19" Alloy		
Tyre size		235/55 R19		

Performance											
Acceleration	0 - 62mph (0 - 100kmph)	7.5				7.6			5.7		
Max. speed	mph	100								124	
Range (WLTP) combined	miles	251*	251*	250	247	330*	329	322	319	314	
Max. engine power	kW / HP / PS	160 / 214 / 217				178 / 238 / 242			225 / 301 / 306		
Max. torque	Nm	300							600		

CHARGING			
On-board AC charger	kW	7.4	22
DC Rapid Charging capability	kW	130	

Figures shown are indicative and shown for comparability purposes only. Ranges denoted with an asterisk (\*) are based on internal testing data and are pending final homologation in 2023. All other ranges are fully homologated as per the Worldwide Light Vehicle Test Procedure (WLTP). Actual real-world driving results may vary. The range figures may vary depending on factors including the starting charge of the battery, accessories fitted after registration, weather conditions, driving styles and vehicle load. The other figures shown are based on internal testing data of battery and drive-train variants and may vary depending on multiple factors such as optional equipment, battery condition, climate control, maintenance, driving behaviour and non-technical factors like weather conditions, actual route etc. Information does not constitute part of the offer. Nissan expressly reserves the right to modify at any time.

# PRICE LIST

GRADE	BATTERY	BASIC £	VAT £	TOTAL RETAIL £	ON THE ROAD £	INC. ECG GRANT
Engage	63kWh	£29,112.50	£5,822.50	£34,935.00	£35,000.00	£33,500.00
Shiro	63kWh	£29,112.50	£5,822.50	£34,935.00	£35,000.00	£33,500.00
Advance	63kWh	£32,445.83	£6,489.17	£38,935.00	£39,000.00	£37,500.00
Evolve	63kWh	£36,612.50	£7,322.50	£43,935.00	£44,000.00	-
Engage	87kWh	£30,779.17	£6,155.83	£36,935.00	£37,000.00	£35,500.00
Advance	87kWh	£34,112.50	£6,822.50	£40,935.00	£41,000.00	£39,500.00
Evolve	87kWh	£38,279.17	£7,655.83	£45,935.00	£46,000.00	-
Advance e-4ORCE	87kWh	£37,862.50	£7,572.50	£45,435.00	£45,500.00	-
Evolve e-4ORCE	87kWh	£42,029.17	£8,405.83	£50,435.00	£50,500.00	-

COMPANY CAR TAX DRIVERS^				
GRADE	P11D VALUE* £	BIK ** %	MONTHLY BIK £ AT 20%	MONTHLY BIK £ AT 40%
Engage 63kWh	£34,935.00	3%	£17.47	£34.94
Shiro 63kWh	£34,935.00	3%	£17.47	£34.94
Advance 63kWh	£38,935.00	3%	£19.47	£38.94
Evolve 63kWh	£43,935.00	3%	£21.97	£43.94
Engage 87kWh	£36,935.00	3%	£18.47	£36.94
Advance 87kWh	£40,935.00	3%	£20.47	£40.94
Evolve 87kWh	£45,935.00	3%	£22.97	£45.94
Advance 87kWh e-4ORCE	£45,435.00	3%	£22.72	£45.44
Evolve 87kWh e-4ORCE	£50,435.00	3%	£25.22	£50.44

^Representative examples only - subject to change. Information does not constitute financial advice. You may want to seek advice from a tax advisor. \*P11D values measured by Total Retail, not OTR.  
\*\*BIK figures are based on HMRC's 2025 quoted rates.

# PRICE LIST

	ENGAGE	SHIRO	ADVANCE & e-4ORCE ADVANCE	EVOLVE & e-4ORCE EVOLVE	BASIC £	VAT £	TOTAL RETAIL £
Special Paint (Aurora Green)	●	-	●	●	0	0	0
Metallic Paint	○	-	○	○	620.83	124.17	745.00
Pearlescent Paint	○	●	○	○	620.83	124.17	745.00
Two-Tone Metallic Paint	-	-	○	○	1,162.50	232.50	1,395.00
Two-Tone Pearlescent Paint	-	-	○	○	1,162.50	232.50	1,395.00
Design Pack: LED front fog lights and Super UV and infrared cut glass with rear privacy glass	-	●	●	●	375.00	75.00	450.00
ProPILOT Assist Pack: ProPILOT Assist with Navi-Link**, Intelligent Lane Keep Assist**, Intelligent Traffic Jam Pilot** and Wireless Phone Charger	-	●	●	●	1,079.17	215.83	1,295.00
Comfort Pack: Black synthetic leather seats with fabric inserts, heated front seats, heated steering wheel, power driver and passenger 6-way seats with driver lumbar support	-	-	●	●	1,079.17	215.83	1,295.00
Bose Tech Pack (includes Intelligent Rear View Mirror, 10 Bose Speakers, and the Advanced Windscreen Head Up Display)	-	-	-	●	1,458.33	291.67	1,750.00
Sky Pack (includes the Electric Panoramic Sunroof)	-	-	○	●	1,079.17	215.83	1,295.00
Sport Pack (Includes the 20" Alloy Wheels & Aero Covers, and the Blue Upholstery with Nappa Leather Seat Fronts*)	-	-	-	○	1,662.50	332.50	1,995.00
On-board AC charger CCS type, 22.0kW	-	-	-	●	745.83	149.17	895.00
Black Upholstery - Fabric	●	●	-	-	0.00	0.00	0.00
Black Upholstery - Synthetic Leather with Fabric inserts	-	-	●	-	0.00	0.00	0.00
Black Upholstery - Synthetic Leather with Ultrasuede® inserts	-	-	-	●	0.00	0.00	0.00
Grey Upholstery - Synthetic Leather with Ultrasuede® inserts	-	-	-	○	412.50	82.50	495.00
Blue Upholstery - Nappa leather seat fronts with synthetic leather parts*	-	-	-	○	1,079.17	215.83	1,295.00

Optional - ○ Standard - ●

\*Side and back of seats are trimmed with a synthetic alternative to leather.  
\*\* It is your responsibility to stay alert, drive safely and be in control of the vehicle at all times. Driver assist features have speed and other limitations and should not be solely relied on. Some features may not work in all conditions and circumstances and may require paid subscription. For more information, please refer to the owner's manual, contact your Nissan dealer or visit [www.nissan.co.uk/techterms](http://www.nissan.co.uk/techterms)









Nissan. Innovation that excites.

visit our website at: [www.nissan.co.uk](http://www.nissan.co.uk)

Follow Nissan ARIYA on:



**YouTube**

Dealer stamp:

Every effort has been made to ensure that the content of this publication is correct at the time of going to press (August 2025). This brochure has been produced featuring prototype vehicles exhibited at motor shows. In accordance with the company's policy of continuously improving its products, Nissan International reserves the right to change at any time the specification and the vehicles described and shown in this publication. Nissan dealers will be informed of any such modifications as quickly as possible. Please check with your local Nissan dealer to receive the most up-to-date information. Because of the limitations of the printing processes used, the colours shown in this brochure may differ slightly from the actual colours of the paint and interior trim materials used. All rights reserved. Reproduction in whole or part of this brochure without the written permission of Nissan International is forbidden.

Part Number: 99999-54456. Printed in the UK