



NISSAN JUKE

HYBRID MY23.75

PRODUCT & PRICING GUIDE

January 2024

All Product & Pricing Information within refers to the Juke
MY23.75 Model from September 10th, 2023

GRADE SPECIFICATION SV PREMIUM



SAFETY & SECURITY

- Cruise Control
- Speed Limiter
- Intelligent Emergency Braking with Pedestrian & Cyclist Recognition
- Intelligent Lane Intervention & Warning
- High Beam Assist
- Traffic Sign Recognition
- Automatic Hazard Signal + Emergency Stop signal
- Driver and Passenger Airbags
- Front side & Curtain airbags
- Height adjustable Seat Belts
- ISO-FIX + Top Tether Rear Seats
- TPMS with 4 wheel independent info
- ABS + EBD + Brake Assist
- Vehicle Dynamic Control + Traction Control
- + Active Trace Control + Active Ride Control
- Hill Start Assist
- Spare wheel
- Peripheral Alarm
- eCall
- Rear Parking Sensors

EXTERIOR

- LED Lamps (Fr & RR & DRL & RR Fog + LED Front Fogs)
- "Follow Me Home" Lights
- Rain Sensing Wipers
- 17" black + diamond cut alloy wheel
- Electric, Heated & Auto Folding Mirrors with Indicator
- Body Coloured Door handles
- Rear Spoiler
- Privacy Glass
- Rear Brake Discs
- Sharkfin Antenna

INTERIOR

- Auto Air Con
- iKey + Push engine start/stop button + Walk-Away Lock & Approach Unlock
- Radio + DAB + 6 speakers
- 8" Touch Screen Display
- Apple Car play
- Android Auto
- Rearview Camera
- Bluetooth + FR & RR USB + AUX + 12V
- 7" Colour Combimeter
- NissanConnect Services
- Monoform sporty seats
- Multifunctional Steering wheel
- Telescopic, Leather Steering wheel
- Leather Gear Shift
- Voice Recognition
- Electric windows x 4 + 1 touch driver
- eHandbrake w/ Auto Hold Function
- Auto dimming rearview mirror
- Outside temperature sensor
- Driver & Passenger Vanity mirrors
- Driver & Passenger sliding/reclining seats
- Driver Seat Lifting
- Welcome/Ambient lighting on Console
- Cloth + Part Synthetic Leather Bolsters
- 3 Rear headrests
- 60/40 rear seats
- Bottle holder Fr & Rr doors
- 2 Fr Cup holders in console
- Front & Rear room lights
- Luggage room light
- Chrome Interior Door handles
- Front Armrest
- Drive Modes (Normal, Eco & Sport)
- ePedal

OPTIONS

1. **TECH PACK - €1,650**
 - ProPILOT
 - Around View Monitor + Moving Object Detection
 - Blind Spot Warning & Intervention
 - Driver Attention Alert
 - Rear Cross-Traffic Alert
 - Navigation Services
2. **NAVIGATION SERVICES - €450**
3. **METALLIC/2TONE PAINT - €600/€900**

Optional extras may impact fuel consumption, CO2 & Road Tax figures

TECH DATA

HP	CO2	FUEL CONS.
143	113	5L

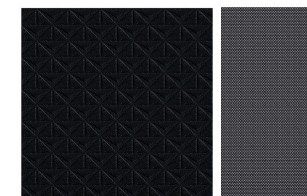
Fuel Consumption & CO2s are tested under WLTP.

PRICING

RRP	ROAD TAX
€35,350	€190

**Prices exclude dealer delivery related charges*

INTERIOR TRIM



Cloth + Part Synthetic leather

WHEELS



17" black + diamond cut alloy wheel



19" *Alloy featured on image to the right is optional



GRADE SPECIFICATION

N DESIGN (ADDITIONIONAL TO SV PREMIUM IN **BOLD**)



SAFETY & SECURITY

- Cruise Control
- Speed Limiter
- Intelligent Emergency Braking with Pedestrian & Cyclist Recognition
- Intelligent Lane Intervention & Warning
- High Beam Assist
- Traffic Sign Recognition
- Automatic Hazard Signal + Emergency Stop signal
- Driver and Passenger Airbags
- Front side & Curtain airbags
- Height adjustable Seat Belts
- ISO-FIX + Top Tether Rear Seats
- TPMS with 4 wheel independent info
- ABS + EBD + Brake Assist
- Vehicle Dynamic Control + Traction Control
- + Active Trace Control + Active Ride Control
- Hill Start Assist
- Spare wheel
- Peripheral Alarm
- eCall
- Rear Parking Sensors

EXTERIOR

- LED Lamps (Fr & RR & DRL & RR Fog + LED Front Fogs)
- "Follow Me Home" Lights
- Rain Sensing Wipers
- **19" Aero 2Tone Alloy Wheels**
- Electric, Heated & Auto Folding Mirrors with Indicator
- Body Coloured Door handles
- Rear Spoiler
- Privacy Glass
- Rear Brake Discs
- Sharkfin Antenna
- **Metallic Paint, Two Tone Roof + Exterior Clip On Parts**

INTERIOR

- Auto Air Con
- iKey + Push engine start/stop button + Walk-Away Lock & Approach Unlock
- Radio + DAB + 6 speakers
- 8" Touch Screen Display
- Apple Car play
- Android Auto
- Rearview Camera
- Bluetooth + FR & RR USB + AUX + 12V
- 7" Colour Combimeter
- NissanConnect Services
- Monoform sporty seats
- Multifunctional Steering wheel
- Telescopic, Leather Steering wheel
- Leather Gear Shift
- Voice Recognition
- Electric windows x 4 + 1 touch driver
- eHandbrake w/ Auto Hold Function
- Auto dimming rearview mirror
- Outside temperature sensor
- Driver & Passenger Vanity mirrors
- Driver & Passenger sliding/reclining seats
- Driver Seat Lifting
- Welcome/Ambient lighting on Console
- Cloth + Part Synthetic Leather Bolsters
- 3 Rear headrests
- 60/40 rear seats
- Bottle holder Fr & Rr doors
- 2 Fr Cup holders in console
- Front & Rear room lights
- Luggage room light
- Chrome Interior Door handles
- Front Armrest
- Drive Modes (Normal, Eco & Sport)
- ePedal

OPTIONS

- 1. INTERIOR PACK - €1,100**
 - Seats, Dashboard, Door panels, armrest (Black, Orange or Grey)
 - White Ambient lighting around gear console & Doors
 - Seat back pockets x2
- 2. BOSE® + interior Pack - €1,550**
- 3. TECH PACK - €1,650**
 - ProPILOT
 - Around View Monitor + Moving Object Detection
 - Blind Spot Warning & Intervention
 - Driver Attention Alert
 - Rear Cross-Traffic Alert
 - Navigation Services

Optional extras may impact fuel consumption, CO2 & Road Tax figures

TECH DATA

HP	CO2	FUEL CONS.
143	112	4.9L

Fuel Consumption & CO2s are tested under WLTP and refer to Low Resistance Tyre Models.

PRICING

RRP	ROAD TAX
€37,350	€190

**Prices exclude dealer delivery related charges*

INTERIOR TRIM*



Optional Orange Interior Pack
**See SV Premium for standard N DESIGN trim*

WHEELS



19" Aero 2Tone Alloy Wheels



GRADE SPECIFICATION

SVE (ADDITIONAL TO SV PREMIUM IN **BOLD**)



SAFETY & SECURITY

- **Intelligent Cruise Control**
- **Intelligent Driver Alertness**
- **Propilot (DCT) or Drive Assist (MT)**
- Speed Limiter
- Intelligent Emergency Braking with Pedestrian & Cyclist Recognition
- Intelligent Lane Intervention & Warning
- **Blind Spot Intervention**
- High Beam Assist
- Traffic Sign Recognition
- Automatic Hazard Signal + Emergency Stop signal
- Driver and Passenger Airbags
- Front side & Curtain airbags
- Height adjustable Seat Belts
- ISO-FIX + Top Tether Rear Seats
- TPMS with 4 wheel independent info
- ABS + EBD + Brake Assist
- Vehicle Dynamic Control + Traction Control
- + Active Trace Control + Active Ride Control
- Hill Start Assist
- Spare wheel
- Peripheral Alarm
- eCall
- Rear Parking Sensors + **Rear Cross Traffic Alert**

EXTERIOR

- LED Lamps (Fr & RR & DRL & RR Fog + LED Front Fogs)
- "Follow Me Home" Lights
- Rain Sensing Wipers
- **19" Alloy Wheels**
- Electric, Heated & Auto Folding Mirrors with Indicator
- Body Coloured Door handles
- Rear Spoiler
- Privacy Glass
- Rear Brake Discs
- Sharkfin Antenna

INTERIOR

- Auto Air Con
- iKey + Push engine start/stop button + Walk-Away Lock & Approach Unlock
- Radio + DAB + 6 speakers
- 8" Touch Screen Display
- Apple Car play
- Android Auto
- Rearview Camera
- Bluetooth + FR & RR USB + AUX + 12V
- 7" Colour Combimeter
- NissanConnect Services
- Monoform sporty seats
- Multifunctional Steering wheel
- Telescopic, Leather Steering wheel
- Leather Gear Shift
- Voice Recognition
- Electric windows x 4 + 1 touch driver
- eHandbrake w/ Auto Hold Function
- Auto dimming rearview mirror
- Outside temperature sensor
- Driver & Passenger Vanity mirrors
- Driver & Passenger sliding/reclining seats
- Driver Seat Lifting
- Welcome/Ambient lighting on Console
- **Synthetic Leather Seats**
- 3 Rear headrests
- 60/40 rear seats
- Bottle holder Fr & Rr doors
- 2 Fr Cup holders in console
- Front & Rear room lights
- Luggage room light
- Chrome Interior Door handles
- Front Armrest
- Drive Modes (Normal, Eco & Sport)
- ePedal

OPTIONS

1. **BOSE® - €450**
2. **METALLIC/2TONE PAINT - €600/€900**

Optional extras may impact fuel consumption, CO2 & Road Tax figures

INTERIOR

(cont.)

- **Around View Monitor with Front Sensors + Moving Object Detection**
- **Navigation Services**
- **White Ambient lighting around gear console & Doors**
- **Seat back pockets x2**



TECH DATA

HP	CO2	FUEL CONS.
143	113	5L

Fuel Consumption & CO2s are tested under WLTP and refer to Low Resistance Tyre Models.

PRICING

RRP	ROAD TAX
€38,350	€190

*Prices exclude dealer delivery related charges

INTERIOR TRIM



Black Synthetic Leather

WHEELS



19" Alloy Wheels





COLOURS

PEARL WHITE



PEARL - €600

FUJI SUNSET RED



METALLIC - €600

MAGNETIC BLUE



METALLIC - €600

CERAMIC GREY



METALLIC - €600

GUN GREY



METALLIC - €600

BURGUNDY



METALLIC - €600

BLADE SILVER



METALLIC - €600

BLACK



METALLIC - €600

RED



SOLID - €0

WHITE



SOLID - €0

TWO TONE PAINT* - €900

ROOF COLOUR

BLACK



PEARL WHITE
BLADE SILVER
GUN GREY

FUJI SUNSET RED
CERAMIC GREY
BURGUNDY

SILVER



BLACK
BURGUNDY
FUJI SUNSET RED

RED



SILVER
GUN GREY
BLACK

ROOF COLOUR

BODY COLOURS

BODY COLOURS

*Sharkfin Antenna is always black

N DESIGN INTERIOR PACK OPTIONS



**SILVER EXTERIOR
PACK***



**BLACK EXTERIOR
PACK**



**RED EXTERIOR
PACK***



**BLACK INTERIOR
PACK**



**BLACK INTERIOR
PACK**



**ORANGE INTERIOR
PACK**



**GREY INTERIOR
PACK**



**ORANGE INTERIOR
PACK**

BOSE

MUST ADD BOSE

*Sharkfin Antenna is always black

DIMENSIONS



D - OVERALL HEIGHT

1,593

MM



A - OVERALL LENGTH

4,210

MM

B - WHEELBASE

2,636

MM

C - OVERALL WIDTH

1,983

MM

(WITH OPENED MIRRORS)



BOOT CAPACITY

354L

1,477

MM

A - BOOT SPACE MAX. LENGTH

1,239

MM

B - BOOT SPACE MAX. WIDTH



Please note that every effort has been made to ensure that the contents of this publication are accurate and up-to-date at time of publication (September 2023). Nissan Ireland reserves the right to amend specification, colours, trims, options and pricing etc. without notice. This guide is not a contractual document or offer of sale. Images contained within are for illustration purposes only. Please contact your local Nissan dealer to discuss the latest product and pricing information.