



NISSAN
MY25 JUKE
PRODUCT & PRICING GUIDE
April 2026

All Product & Pricing Information within refers to the Juke MY25 Model from April 2026

GRADE SPECIFICATION

SV (Entry Level)



SAFETY & SECURITY

- Driver and Passenger front, side & curtain airbags
- Rear ISO-FIX + Top Tether
- ABS + EBD + Brake Assist
- Height adjustable seat belts
- Seat belts reminder (for all seating positions)
- Vehicle Dynamic Control + Traction Control + Hill Start Assist + Active Trace Control + Active Ride Control
- Emergency Call
- Cruise Control & Speed Limiter
- Intelligent Emergency Braking with Pedestrian & Cyclist Recognition
- Intelligent Lane Intervention and Warning
- High Beam Assist
- Driver Drowsiness & Attention Alert
- Traffic Sign Recognition
- Tyre Pressure Monitoring System
- Peripheral Alarm
- Child lock + Central door lock switch + superlocking
- Idle Stop & Start system

EXTERIOR

- Body colour electrically adjustable exterior mirrors with integrated turn signal
- Grained black plastic exterior door handles, bumper finishers & mouldings
- Driver door key lock cylinder
- Push-push type fuel lid
- Shark fin antenna
- 17" 'Sakura' flex wheel
- Automatic light with "follow me home",
- Automatic Hazard Signal (Emergency Stop signal)
- LED lamps (FR & RR & DTRL & RR Fog)

INTERIOR

- Manual dimming interior rear-view mirror
- Driver & Passenger vanity mirrors
- Grey headliner, without assist grip handles
- Cloth Seat Trim
- Matte Black inside door handle
- Welcome light
- Front & Rear room lights (no LED)
- Luggage room light
- Glove box
- Telescopic steering wheel with manual tilt
- Multifunction steering wheel
- Front monoform sporty design seat with integrated headrest
- Driver 6 ways adjustable seat: sliding/reclining/height)
- Passenger 4 ways adjustable seat: sliding/reclining
- Rear seat: 60/40 folding flat to floor, 3 separated headrests
- Center console with integrated arm rest
- Melange fabric + black PVC accent dashboard
- Cup holder Fr X2 in console
- Bottle Holder Front & Rear doors

OPTIONS

COMFORT PACK - €600

- Auto A/C
- Heated & Auto folding mirrors
- Heated Front Seats

METALLIC PAINT - €600

Optional extras may impact fuel consumption, CO2 & Road Tax figures

TECHNOLOGY

- Manual Air Conditioning
- 12.3" touch screen display with Radio, DAB,, Bluetooth, & Voice Recognition
- 4 Speakers
- Wireless Android Auto & Apple CarPlay
- 7" Colour TFT combimeter screen
- Outside temperature thermometer
- Electric windows x4
- One Touch Driver Window
- New keyfob (remote door operation) with Engine start by key
- Electric Parking brake with auto hold function
- Paddle shift for DCT
- 2x Front USB (type A + type C) + 12V socket
- Rear view monitor (Rear camera)
- Pre-wiring for accessory towing device

ENGINE

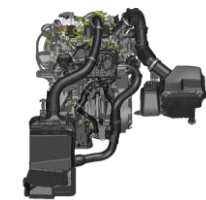
Engine	Transmission	CO2	FUEL CONS.
1.0L Petrol	6 Speed Manual	133	5.9L
	7 Speed DCT	138	6.1L

Fuel Consumption & CO2s are tested under WLTP.

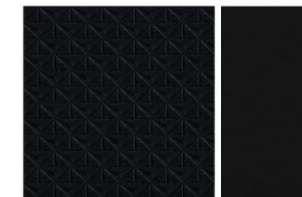
PRICING

Variant	RRP	ROAD TAX
Manual	€31,400	€210
DCT	€33,400	€210

**Prices exclude dealer delivery related charges*



INTERIOR TRIM



Black Embossed Fabric /
Black Fabric

WHEELS



17" Flex Wheels



GRADE SPECIFICATION

SV PREMIUM (SV+)



SAFETY & SECURITY

- Driver and Passenger front, side & curtain airbags
- Rear ISO-FIX + Top Tether
- ABS + EBD + Brake Assist
- Height adjustable seat belts
- Seat belts reminder (for all seating positions)
- Vehicle Dynamic Control + Traction Control + Hill Start Assist + Active Trace Control + Active Ride Control
- Emergency Call
- Cruise Control & Speed Limiter
- Intelligent Emergency Braking with Pedestrian & Cyclist Recognition
- Intelligent Lane Intervention and Warning
- High Beam Assist
- Driver Drowsiness & Attention Alert
- Traffic Sign Recognition
- Tyre Pressure Monitoring System
- Peripheral Alarm
- Child lock + Central door lock switch + superlocking
- Idle Stop & Start system

EXTERIOR

- Body colour electrically **Foldable & Heated** exterior mirrors with integrated turn signal
- Grained black plastic bumper finishers & mouldings
- **Body Coloured Door Handles**
- Driver door key lock cylinder
- Push-push type fuel lid
- Shark fin antenna
- **17" Diamond Cut Alloy wheel**
- Automatic light with "follow me home",
- Automatic Hazard Signal (Emergency Stop signal)
- LED lamps (FR & RR & DTRL & RR Fog) with manual leveliser
- **Privacy Glass**
- **Rain Sensing Wipers**

INTERIOR

- Manual dimming interior rear-view mirror
- Driver & Passenger vanity mirrors
- **Black Headliner with assist grips & coat hanger**
- Cloth Seat Trim
- Matte Black inside door handle
- Welcome light
- Front & Rear room lights (no LED)
- Luggage room light
- Glove box
- Telescopic steering wheel with manual tilt
- Multifunction steering wheel
- Front monoform sporty design seat with integrated headrest
- Driver 6 ways adjustable seat: sliding/reclining/height)
- Passenger 4 ways adjustable seat: sliding/reclining
- Rear seat: 60/40 folding flat to floor, 3 separated headrests
- Center console with integrated arm rest
- Melange fabric + black PVC accent dashboard
- Cup holder Fr x2 in console
- Bottle Holder Front & Rear doors
- **Luggage Board**

OPTIONS

COLD PACK – €600

- Heated Front Windshield
- Heated Front Seats
- Heated Steering Wheels

METALLIC PAINT – €600

2 TONE PAINT – €900

Optional extras may impact fuel consumption, CO2 & Road Tax figures

TECHNOLOGY

- **Auto** Air Conditioning
- 12.3" touch screen display with Radio, DAB,, Bluetooth, & Voice Recognition
- 4 Speakers
- Wireless Android Auto & Apple CarPlay
- 7" Colour TFT combimeter screen
- Outside temperature thermometer
- Electric windows x4
- One Touch Driver Window & **passenger iKey with walk away lock approach unlock**
- **Engine Start/Stop Button**
- Electric Parking brake with auto hold function
- Paddle shift for DCT
- 2x Front USB (type A + type C) + 12V socket & **2 Rear USB (Type C)**
- Rear view monitor (Rear camera)
- **Front & Rear Parking Sensors**
- **Drive modes (ECO, Sport, Normal)**
- Pre-wiring for accessory towing device

ENGINE

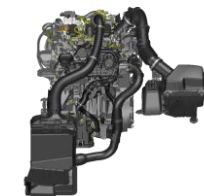
Engine	Transmission	CO2	FUEL CONS.
1.0L Petrol	6 Speed Manual	133	5.9L
	7 Speed DCT	139	6.1L

Fuel Consumption & CO2s are tested under WLTP.

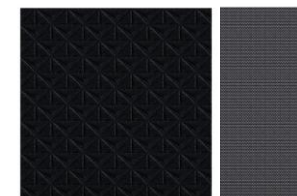
PRICING

Variant	RRP	ROAD TAX
Manual	€32,400	€210
DCT	€34,400	€210

**Prices exclude dealer delivery related charges*



INTERIOR TRIM



Cloth + Synthetic leather

WHEELS



17" Diamond Cut Alloys



GRADE SPECIFICATION

N DESIGN (SV Premium +)



SAFETY & SECURITY

- Driver and Passenger front, side & curtain airbags
- Rear ISO-FIX + Top Tether
- ABS + EBD + Brake Assist
- Height adjustable seat belts
- Seat belts reminder (for all seating positions)
- Vehicle Dynamic Control + Traction Control + Hill Start Assist + Active Trace Control + Active Ride Control
- Emergency Call
- Cruise Control & Speed Limiter
- Intelligent Emergency Braking with Pedestrian & Cyclist Recognition
- Intelligent Lane Intervention and Warning
- High Beam Assist
- Driver Drowsiness & Attention Alert
- Traffic Sign Recognition
- Tyre Pressure Monitoring System
- Peripheral Alarm
- Child lock + Central door lock switch + superlocking
- Idle Stop & Start system

EXTERIOR

- Body colour electrically Foldable & Heated exterior mirrors with integrated turn signal
- Grained black plastic bumper finishers & mouldings
- Body Coloured Door Handles
- Driver door key lock cylinder
- Push-push type fuel lid
- Shark fin antenna
- **19" Alloy wheel**
- Automatic light with "follow me home",
- Automatic Hazard Signal (Emergency Stop signal)
- LED lamps (FR & RR & DTRL & RR Fog) with manual leveliser adjustment
- Privacy Glass
- Rain Sensing Wipers
- Front Fog Lamps
- **Satin Grey Exterior Finishers**
- **2 Tone paint w/ black roof**
- **N-DESIGN badge on tail gate**

INTERIOR

- **Auto dimming frameless interior rear-view mirror**
- Driver & Passenger vanity mirrors
- Black Headliner with assist grips & coat hanger
- Cloth Seat Trim
- Matte Black inside door handle
- Welcome light
- Front & Rear room lights (no LED)
- Luggage room light
- Glove box
- Telescopic steering wheel with manual tilt
- Multifunction steering wheel
- Front monoform sporty design seat with integrated headrest
- Driver 6 ways adjustable seat: sliding/reclining/height)
- Passenger 4 ways adjustable seat: sliding/reclining
- Rear seat: 60/40 folding flat to floor, 3 separated headrests
- Center console with integrated arm rest
- Melange fabric + black PVC accent dashboard
- Cup holder Fr x2 in console
- Bottle Holder Front & Rear doors
- Luggage Board

OPTIONS

COLD PACK – €600

- Heated Front Windshield
- Heated Front Seats
- Heated Steering Wheels

Optional extras may impact fuel consumption, CO2 & Road Tax figures

TECHNOLOGY

- Auto Air Conditioning
- 12.3" touch screen display with Radio, DAB,, Bluetooth, & Voice Recognition
- 4 Speakers
- Sat Nav
- Wireless Android Auto & Apple CarPlay
- 7" Colour TFT combimeter screen
- Outside temperature thermometer
- Electric windows x4
- One Touch Driver Window & passenger iKey with walk away lock approach unlock
- Engine Start/Stop Button
- Electric Parking brake with auto hold function
- Paddle shift for DCT
- 2x Front USB (type A + type C) + 12V socket & 2 Rear USB (Type C)
- Rear view monitor (Rear camera)
- Front & Rear Parking Sensors
- Drive modes (ECO, Sport, Normal)
- Pre-wiring for accessory towing device

ENGINE

Engine	Transmission	CO2	FUEL CONS.
1.0L Petrol	6 Speed Manual	135	5.9L
	7 Speed DCT	141	6.1L

Fuel Consumption & CO2s are tested under WLTP.

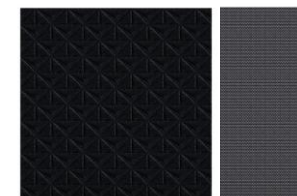
PRICING

Variant	RRP	ROAD TAX
Manual	€34,400	€210

**Prices exclude dealer delivery related charges*



INTERIOR TRIM



Cloth + Synthetic leather

WHEELS



19" Alloys



GRADE SPECIFICATION

SVE (SV Premium +)



SAFETY & SECURITY

- Driver and Passenger front, side & curtain airbags
- Rear ISO-FIX + Top Tether
- ABS + EBD + Brake Assist
- Height adjustable seat belts
- Seat belts reminder (for all seating positions)
- Vehicle Dynamic Control + Traction Control + Hill Start Assist + Active Trace Control + Active Ride Control
- Emergency Call
- Cruise Control & Speed Limiter
- Intelligent Emergency Braking with Pedestrian & Cyclist Recognition
- Intelligent Lane Intervention and Warning
- High Beam Assist
- Driver Drowsiness & Attention Alert
- Traffic Sign Recognition
- Tyre Pressure Monitoring System
- Peripheral Alarm
- Child lock + Central door lock switch + superlocking
- Idle Stop & Start system
- **Rear Cross Traffic Alert**
- **ProPILOT - DCT**
- **ProPILOT (ICC & LKA) - Manual**

EXTERIOR

- Body colour electrically Foldable & Heated exterior mirrors with integrated turn signal
- Grained black plastic bumper finishers & mouldings
- Body Coloured Door Handles
- Driver door key lock cylinder
- Push-push type fuel lid
- Shark fin antenna
- **19" Full Black SVE Alloy wheel**
- Automatic light with "follow me home",
- Automatic Hazard Signal (Emergency Stop signal)
- LED lamps (FR & RR & DTRL & RR Fog) with manual leveliser adjustment
- Privacy Glass
- Rain Sensing Wipers
- **Front Fog Lamps**

INTERIOR

- **Auto dimming frameless interior rear-view mirror**
- Driver & Passenger vanity mirrors
- Black Headliner with assist grips & coat hanger
- **Synthetic Leather Trim with seat back pockets**
- Matte Black inside door handle
- Welcome light
- Front & Rear room lights (no LED)
- Luggage room light
- Glove box
- Telescopic steering wheel with manual tilt
- Multifunction steering wheel
- Front monoform sporty design seat with integrated headrest
- Driver 6 ways adjustable seat: sliding/reclining/height)
- Passenger 4 ways adjustable seat: sliding/reclining
- Rear seat: 60/40 folding flat to floor, 3 separated headrests
- Centre console with integrated arm rest
- Melange fabric + black PVC accent dashboard
- Cup holder Fr x2 in console
- Bottle Holder Front & Rear doors
- Luggage Board

OPTIONS

COLD PACK – €600

- Heated Front Windshield
- Heated Front Seats
- Heated Steering Wheels

METALLIC PAINT – €600

2 TONE PAINT – €900

Optional extras may impact fuel consumption, CO2 & Road Tax figures

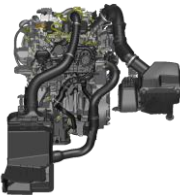
TECHNOLOGY

- Auto Air Conditioning
- 12.3" touch screen display with Radio, DAB, Bluetooth, & Voice Recognition
- 4 Speakers
- Sat Nav
- Wireless Android Auto & Apple CarPlay
- 7" Colour TFT combimeter screen
- Outside temperature thermometer
- Electric windows x4
- One Touch Driver Window & passenger iKey with walk away lock approach unlock
- Engine Start/Stop Button
- Electric Parking brake with auto hold function
- Paddle shift for DCT
- 2x Front USB (type A + type C) + 12V socket & 2 Rear USB (Type C)
- **Around view monitor with MOD**
- **Wireless Phone Charger**
- Front & Rear Parking Sensors
- Drive modes (ECO, Sport, Normal)
- Pre-wiring for accessory towing device

ENGINE

Engine	Transmission	CO2	FUEL CONS.
1.0L Petrol	6 Speed Manual	135	5.9L
	7 Speed DCT	140	6.2L

Fuel Consumption & CO2s are tested under WLTP.

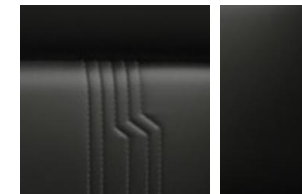


PRICING

Variant	RRP	ROAD TAX
Manual	€35,400	€210
DCT	€37,400	€210

**Prices exclude dealer delivery related charges*

INTERIOR TRIM



Black Synthetic Leather

WHEELS



19" Black SVE Alloys



COLOURS



FUJI SUNSET RED



METALLIC - €600

MAGNETIC BLUE



METALLIC - €600

CERAMIC GREY



METALLIC - €600

GUN GREY



METALLIC - €600

PEARL WHITE



PEARL - €600

BLACK



METALLIC - €600

YELLOW



METALLIC - €600

WHITE



SOLID - €0

TWO TONE PAINT* - €900

ROOF COLOUR - BLACK



CERAMIC GREY



GUN GREY



YELLOW



MAGNETIC BLUE



FUJI SUNSET RED



PEARL WHITE

*Sharkfin Antenna is always black

DIMENSIONS



D - OVERALL HEIGHT
1,593
MM



A - OVERALL LENGTH
4,210
MM

B - WHEELBASE
2,636MM

C - OVERALL WIDTH
1,983MM
(WITH OPENED MIRRORS)



BOOT CAPACITY
422

1,477MM
A - BOOT SPACE MAX. LENGTH

1,249MM
B - BOOT SPACE MAX. WIDTH



Please note that every effort has been made to ensure that the contents of this publication are accurate and up-to-date at time of publication (April 2026). Nissan Ireland reserves the right to amend specification, colours, trims, options and pricing etc. without notice. This guide is not a contractual document or offer of sale. Images contained within are for illustration purposes only. Please contact your local Nissan dealer to discuss the latest product and pricing information.