



KICKS



GO EPIC WITH KICKS!

The All-New Nissan KICKS has a bigger personality than ever before. With its chiseled grille and sleek LED headlights, KICKS is designed to turn heads. An impressive 2.0L engine makes every trip powerful and efficient.





EXPERIENCE EPIC CONTROL

The cockpit is yours to command the moment you step inside. The impressive 12.3" Digital Display allows you to navigate like a seasoned adventurer. With KICKS, you might question whether you're searching for action or already centered in it.

| 12.3" digital display

| Best-in-class rear space

| Wireless charging



DISCOVER AN EPIC DRIVE

Even more powerful and efficient than before, the All-New KICKS is powered by an impressive 2.0L 4-cylinder engine that pumps out up to 142 horsepower and 190/4000 rpm (Nm) of torque. Engage one of up to three available Drive Modes, and you're all set to conquer the city.

THREE DRIVE MODES — COUNTLESS POSSIBILITIES



SPORT MODE:

Enjoy higher revs and a tighter drive as you zip across the finish line.



ECO MODE:

Increase your fuel economy as your engine adjusts acceleration and throttle response.



NORMAL MODE:

Handle the city streets and narrow alleys with power and agility.

Up to
18.5 km/l

Up to 142
horsepower

Up to
190/4000 rpm (Nm)
of torque

NISSAN KICKS ACCESSORIES

BUILD TO YOUR BEAT

**A. ILLUMINATED TRUNK SCUFF PLATE**

Enhance your vehicle's style and protect its trunk with our Illuminated Trunk Scuff Plate. Designed to light up upon opening, it adds a touch of elegance while safeguarding against scratches and scuffs.

B. SIDE WINDOW DEFLECTOR

Enjoy fresh air even in the rain with our Side Window Deflector. This sleek accessory reduces wind noise and keeps the elements out, ensuring a comfortable drive in any weather.

C. REAR BUMPER PROTECTOR

Shield your vehicle from everyday wear and tear with our Rear Bumper Protector. Designed to prevent scratches, it ensures your car stays looking new and pristine.

D. CARGO ORGANIZER

Keep your trunk tidy and maximize space with our Cargo Organizer. Featuring multiple compartments, it helps you store and access your essentials with ease, making every journey more organized.

E. PANORAMIC HEADLINER ILLUMINATION

Transform your vehicle's interior with our Panoramic Headliner Illumination. This feature creates a serene and ambient atmosphere, enhancing your driving experience with a touch of luxury and sophistication.

F. EXTERIOR GROUND LIGHTING W/ LOGO

Enhance your vehicle's presence with our Exterior Ground Lighting. This feature provides a welcoming glow as you approach, adding both style and visibility to your car.

G. ILLUMINATED KICKING PLATES(WIRED)

Step into style with our Illuminated Kicking Plate. This accessory not only protects your vehicle's door sills from scuffs and scratches but also adds a touch of elegance with its subtle, glowing illumination.

H. MUD GUARD FRONT/REAR

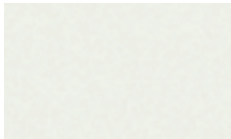
Protect your vehicle from road debris and mud with our Front and Rear Mud Guards. Designed to fit seamlessly, they help keep your car cleaner and reduce paint damage, ensuring a pristine look for longer.

I. CROSS BAR

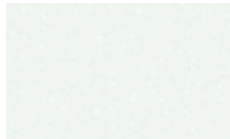
Expand your vehicle's carrying capacity with our durable Cross Bar.



CHOOSE YOUR COLOUR



Aspen White TriCoat
S - SV



Fresh Powder
S - SV



Gun Metallic
S - SV



Canyon Bronze Metallic
S - SV



Arctic Ice Blue Metallic
S - SV



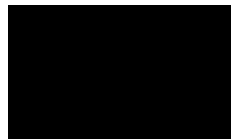
Silver Metallic
S - SV



Scarlet Ember Tintcoat
S - SV



Deep Blue Pearl
S - SV



Super Black
S - SV

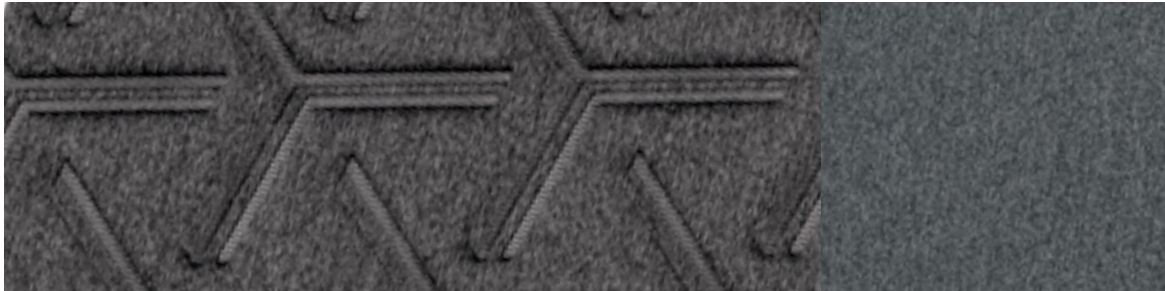


CHOOSE YOUR INTERIOR



Black Cloth

S



Charcoal Premium Cloth

SV



CHOOSE YOUR TRIM LEVEL

S



- 17" Steel wheels with flex wheel covers
- Cruise Control
- Drive Modes (Standard, Eco, Sport)
- LED Headlights with Auto Levelling
- LED Daytime Running Lights
- LED Signature Taillights
- Automatic on/off Headlights
- Nissan Intelligent Key™ with Approach Unlock/Walk Away Lock
- Push Start Engine Button
- Center armrest with storage
- 7" Advanced Driver's Assist Display
- 12.3" Infotainment Display with Multitouch Control
- Wireless Apple CarPlay™ & Wireless Android Auto™
- Bluetooth® Hands-free Phone System
- AM/FM Audio System with 4 Speakers
- Two USB-C Ports
- Rear Parking Sensors
- Front, Side, and Curtain Airbags
- 60/40-split fold-down rear seats
- Hill start assist
- Electronic Parking Brake with Auto Hold
- Speed Sensing Automatic Door Locks
- Tilt & Telescoping Steering Wheel Adjustment
- Power windows with one-touch auto up/down feature



SV INCLUDES S EQUIPMENT PLUS:



- 17" Machine-finished aluminium alloy wheels
- Wireless Charger
- 6 Speakers
- Automatic AC Control
- Auto-Dimming Rear View Mirror



TECHINICAL SPECIFICATIONS

MECHANICAL FEATURES	S	SV
Drive	FWD	
Engine	2.0 L, 4 CYL, 142 HP, 190 Nm	
Displacement	CC	1,997
Max Power	hp	142/6000 rpm
Max Torque	Nm	190/4000 rpm
Transmission	CVT	
Fuel System	DTI	
Suspension	Fr: MacPherson W/ Stabilizer Bar / Rr: Torsion Beam W/ Stabilizer Bar	

DIMENSION, WEIGHT, CAPACITY PERFORMANCE	S	SV
Overall Length (mm)	4,365	
Overall Width Without Mirrors (mm)	1,800	
Overall Width With Mirrors (mm)	2,090	
Overall Height (Unladen) (mm)	1,620	
Wheelbase (mm)	2,655	
Minimum Running Ground Clearance (mm)	194	
Ground Clearance (mm)	(Front Axle) 194	
Seating Capacity	5	
Fuel Tank (Litre)	45	
Fuel Economy (km/l)	18.5	
Wheels	Flex Steel 17"	Alloy 17"
Curb Weight, Unladen (Kg)	1,354	1,369
Gross Vehicle Weight (Kg)	1,750	1,760
Overhang - Front (mm)	900	
Overhang - Rear (mm)	810	
Head Room (Front / Rear) (mm)	1,008 / 978	
Leg Room (Front / Rear) (mm)	1,083 / 876	
Hip Room (Front / Rear) (mm)	1,330 / 1273	
Shoulder Room (Front) (mm)	1389	
Luggage Space Height (mm)	720	
Luggage Space Width (mm)	1,130	
Cargo Volume (VDA Litres)	470	

REGIONAL CUSTOMER COMMUNICATION CENTRE

Dear Customer,

To ensure your satisfaction, we have set up a Customer Communication Centre to address your complaints. Please follow these steps:

Step 1: Contact your local Nissan distributor, who will handle your complaints.

Step 2: If your local Nissan distributor is unable to address your complaints, please contact the Nissan Regional Customer Communication Centre. Tel: +9714 600 54 6666,

E-mail: customer-care@nissan-me.ae



/NissanME



/NissanME



/NissanMiddleEast



@nissanmiddleeast



@nissanmiddleeast



@nissanarabia

