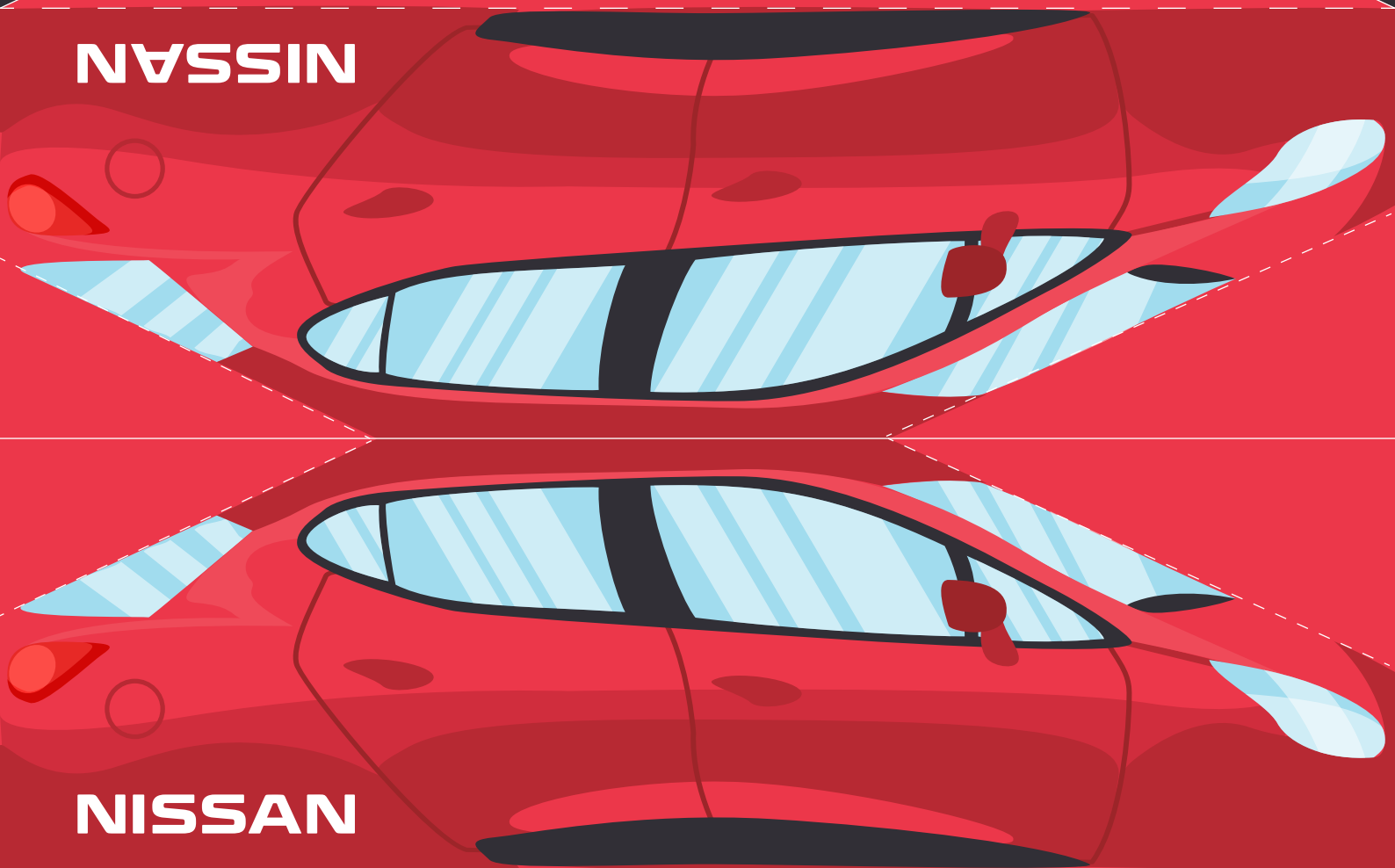
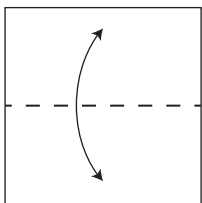


NISSAN

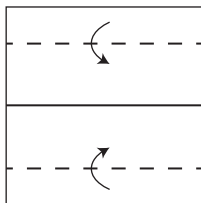


NISSAN

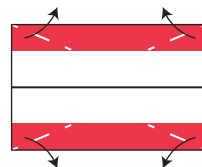
- 1 Dobre a maquete ao meio para criar uma prega.



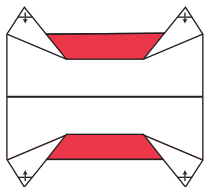
- 2 Faça uma prega em cada uma das suas bordas.



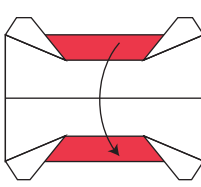
- 3 Dobre os cantos de cada borda.



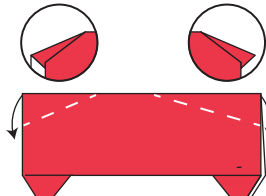
- 4 Faça uma pequena dobra em cada ponta dos cantos.



- 5 Dobre e junte as duas partes.



- 6 Integre os cantos.

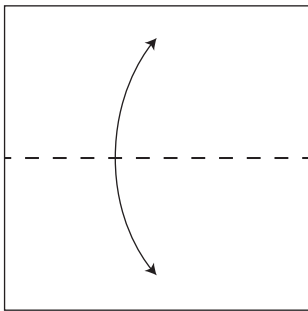


Já pode desfrutar do seu
Nissan ORIGAMI

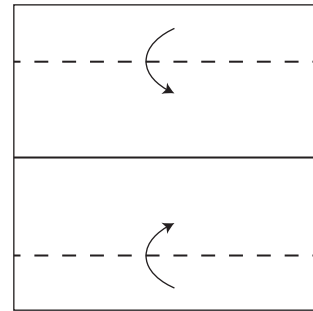
7

NOVO NISSAN ORIGAMI

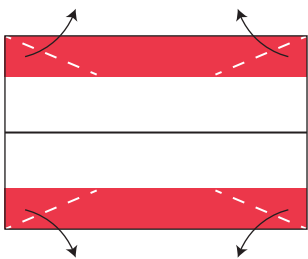
- 1** Dobre a maquete ao meio para criar uma prega.



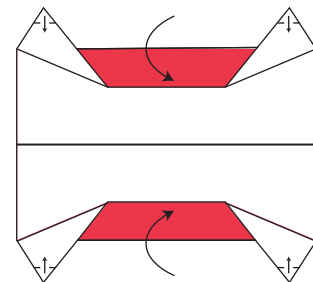
- 2** Faça uma prega em cada uma das suas bordas.



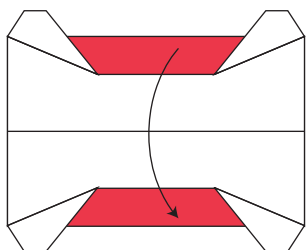
- 3** Dobre os cantos de cada borda.



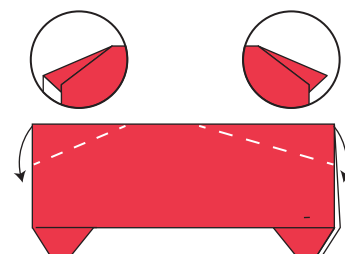
- 4** Faça uma pequena dobra em cada ponta dos cantos.



- 5** Dobre e junte as duas partes.



- 6** Integre os cantos.



- 7** Já pode desfrutar do seu
Nissan ORIGAMI