



# NISSAN NV350

## QUICK REFERENCE GUIDE



# WELCOME TO YOUR NEW NISSAN NV350

This guide provides a quick reference to several useful features of your new NV350.

For a complete description of all systems and features of your vehicle, please refer to the vehicle's OWNER'S MANUAL.



Note that some of these features are optional and may not apply to your vehicle.

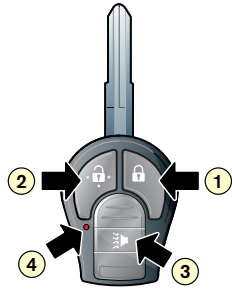
ENJOY YOUR DRIVE!


## CONTENTS


Doors – Unlocking & Locking.....	1	Vehicle Information Display.....	5
Front Seats.....	2	Audio System.....	6
Rear Bench/Seats (if equipped).....	2	Climate Control.....	7
Luggage Room Utility Threads.....	3	Storage Locations (if equipped).....	8
Parking Brake Operation.....	4	In Case of Emergency.....	9
Refuelling.....	4		
Power Outlet.....	4		

## DOORS – UNLOCKING & LOCKING

If your vehicle is equipped with a key fob with remote control buttons, you can lock and unlock the doors by pressing the lock  ① or unlock  ② button on the key fob.

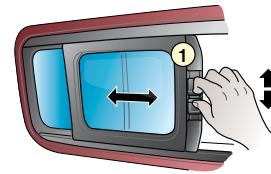
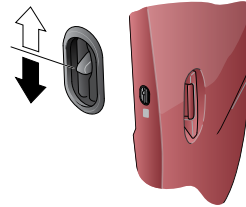



If you are near your vehicle and feel threatened, you can activate the “panic alarm” by pushing the panic alarm button  ③ on the key fob for more than 0.5 seconds. The panic alarm will remain activated for 25 seconds and then turn off automatically.

The battery indicator light  ④ on the key fob will light up when you push one of the buttons on the key fob. If this is not the case, the battery is discharged or nearly discharged and needs to be replaced.

## Sliding door child lock (if equipped)

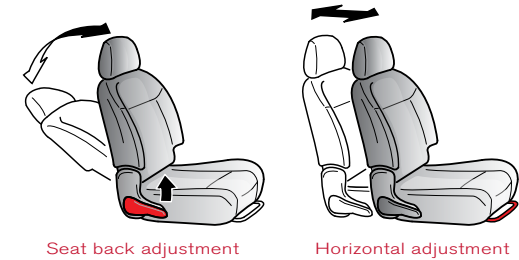
Move the lever to the LOCK position to activate the child door lock function. The sliding door can now only be opened from the outside.



**Sliding door window opening (if equipped)**  
To open the sliding window, squeeze the knob  ① and slide the window open.

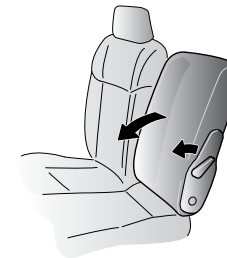
## FRONT SEATS

### Front seat adjustment



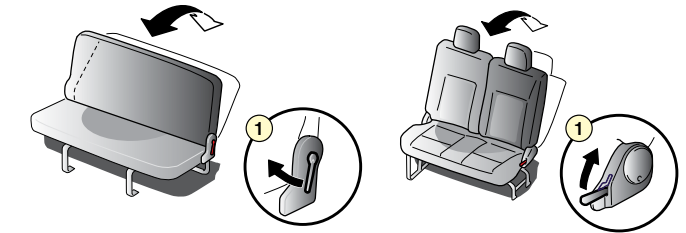
### Folding the front centre seat

To fold the front centre seat, pull the reclining lever all the way and fold the seatback down.




## REAR BENCH/SEATS (IF EQUIPPED)

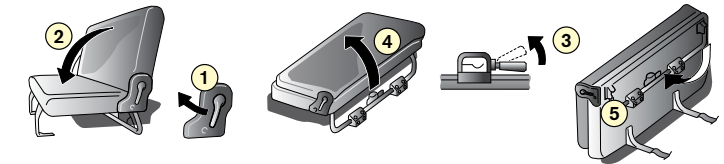
### Reclining the rear bench/seat(s)


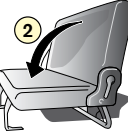

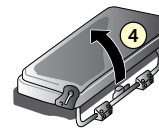
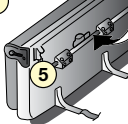


Pull the adjustment lever  ①:

- Tilt the seatback to the desired position
- Release the adjustment lever  ① to lock the seatback in position.

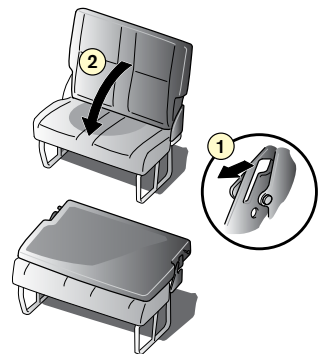
### Folding the rear bench (type A, if equipped)



- Pull the adjustment lever  ① and fold the seatback down  ②
- Pull the lock lever  ③, then lift the rear seat assembly  ④ and tilt it forward
- Fold the rear leg of the seat downward  ⑤.

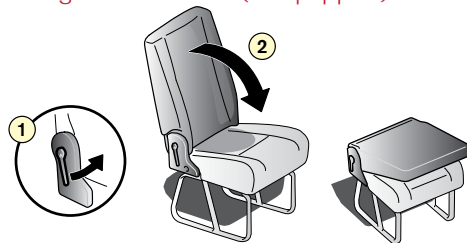
## REAR BENCH/SEATS (CONTINUED)

Folding the rear bench (type B, if equipped)



Pull the lever ① and fold the seatback forward ②.

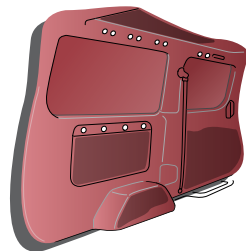
Folding the rear seat (if equipped)



Pull the lever ① and fold the seatback forward ②.

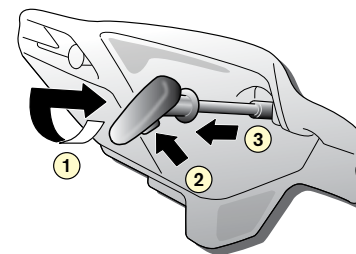
## LUGGAGE ROOM UTILITY THREADS

You can use commercially available M6 bolts (length of thread: 8 mm) to attach various items to both sides of the luggage room. The number of threads in the body depends on the vehicle model.




## PARKING BRAKE OPERATION

To apply the parking brake, pull the parking brake lever out ①. To release the parking brake, apply the foot brake, push the release button ②, turn the lever ③ and push the parking brake lever down completely.

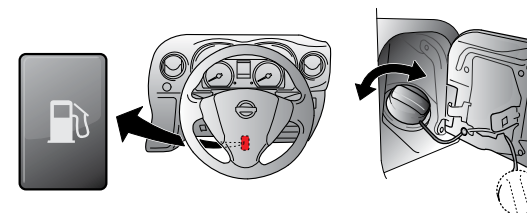


## REFUELLING

The fuel gauge indicates the approximate level of fuel in the tank when the ignition is switched ON. The symbol  reminds you that the fuel filler lid is located on the right hand side of the vehicle.

To open the fuel filler lid, push the fuel filler lid opener switch located at the lower part of the instrument panel as illustrated.

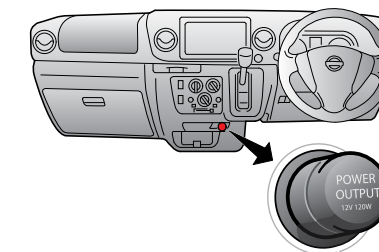
The fuel filler cap is of the ratchet type: after refuelling, tighten the cap until the ratchet clicks more than two times.



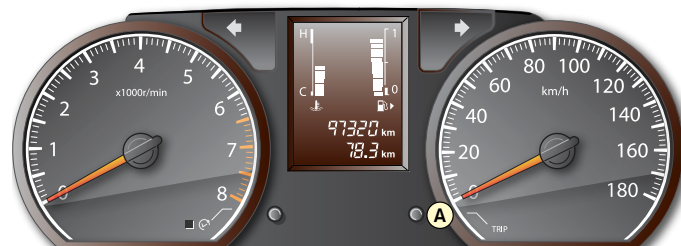
## POWER OUTLET

To power electrical accessories, a power outlet, either fitted with a cigarette lighter or not, is provided in the center console.

The power consumption of electrical accessories connected to the power outlets should not exceed 120W.



## VEHICLE INFORMATION DISPLAY



The vehicle information display is located next to the speedometer and provides a variety of information.

Depending on the model, the display may show:

- Engine coolant temperature gauge
- Fuel gauge
- Automatic Transmission (AT) selector lever position indicator (AT models)
- Upshift indicator (Manual Transmission models)
- Trip computer data
- Clock
- Engine oil level information (diesel engine models)

Each time switch **A** is pushed, the displayed trip computer mode will change as follows:

Trip A ⇒ Trip B ⇒ Current fuel consumption ⇒ Average fuel consumption ⇒ Distance to empty ⇒ Upshift indicator setting.

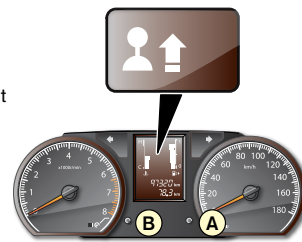
For detailed information, please refer to your vehicle's Owner's Manual.

### Upshift indicator

The upshift indicator is shown in the lower part of the vehicle information display and alerts you to shift to a higher gear at the set engine speed.

To set the upshift indicator engine speed (RPM) at which the indicator will start flashing follow the three steps as outlined below:

1. While the "upshift indicator setting" mode is displayed, push and hold the trip computer mode switch **A**. The setting display will start flashing.
2. While the display is flashing, turn the trip computer mode switch **B** to set the desired engine RPM at which the upshift indicator should start flashing.
3. Push the trip computer mode switch **A** to exit the setting mode.



## AUDIO SYSTEM

FM-AM radio with CD player (if equipped)



### Setting and selecting preset stations

- Push the "PWR" button to switch on the audio unit.
- Press the "FM - AM" button to select the desired waveband.
- Tune into a station automatically or manually using the "SEEK" or "TUNE" button respectively.
- To store the actual radio station being received under one of the six preset buttons, push and hold the desired preset-button: the channel indicator will be displayed and a beep will sound, indicating that the station is properly stored in the memory.

### Clock setting

- While the radio is on, press the "MENU" button repeatedly until "CLOCK ON (CLK ON)/CLOCK OFF (CLK OFF)" is displayed. Press the "SEEK" or "TUNE" button respectively to select "CLK ON".
- Press the "MENU" button while "CLK ON" is displayed. The hour digit will blink and can be adjusted using the "SEEK" or "TUNE" button respectively.
- After setting the hour, press the "MENU" button again: the minute digit will blink and can be adjusted using the "SEEK" or "TUNE" button respectively.
- Press the "MENU" button once more to store the clock setting.

FM-AM radio



### Setting and selecting preset stations

- Push the Volume/ON button to switch on the audio unit.
- Press the "FM - AM" button to select the desired waveband.
- Tune into a station using the "∧" or "∨" button. Press the "∧" or "∨" buttons shortly to manually change the frequency. Push and hold the "∧" / "∨" button for more than one second to automatically tune into the next/previous radio station that can be received.
- To store the actual radio station being received under one of the 5 preset buttons, push and hold the desired preset button: the channel indicator will be displayed, indicating that the station is properly stored in the memory.


### Clock setting

- While the radio is on, push and hold the "DISP" button.
- Press the "∨" button to adjust the hours.
- Press the "∧" button to adjust the minutes.
- Minutes can be reset to zero by pressing the "RESET" button.

## CLIMATE CONTROL

### Defrosting/defogging the windscreen



Turn the fan speed control dial ① to a medium to high fan speed. Turn the air flow distribution dial ② to the  position. Turn the temperature control dial ③ to the high temperature position.

To increase defogging performance under humid conditions, turn on the air conditioner by pressing the air conditioner button ④. The A/C indicator light in the switch will illuminate.

### Heat mode (diesel engine models)

To speed up the heater's effective operation, the idle speed of the cold engine can be increased by pushing the "HEAT" switch on the lower side of the instrument panel.


When the system is switched on, the indicator light in the switch will illuminate. Push the "OFF" side of the switch to turn off the heat mode.




### Air intake modes

You can select between the following air intake modes:

#### Outside air intake mode

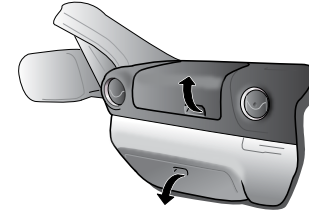
Shift lever ⑤ to the outside air intake  position. In this mode, outside air is drawn into the vehicle interior.

#### Air re-circulation mode

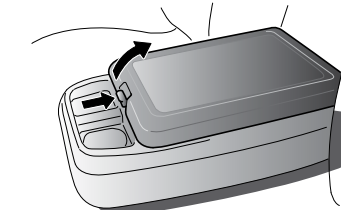
Shift lever ⑤ to the air re-circulation  position. In this mode, the air in the vehicle's interior is re-circulated. Use this mode only when necessary to prevent air from outside being drawn into the vehicle interior. You may use this mode to avoid unpleasant smells, exhaust fumes, dust, etc. to enter the cabin. Under normal conditions however, the air re-circulation mode should not be selected in order to prevent windows fogging up and the air in the interior to become stuffy.

## STORAGE LOCATIONS (IF EQUIPPED)

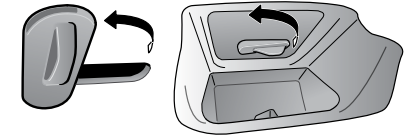
Several additional storage locations are provided for your convenience:



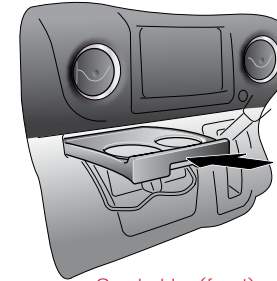
Dashboard upper and lower storage box



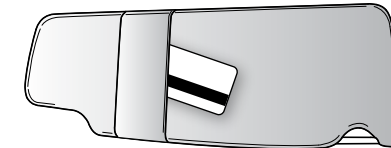
Center console box



Center lower pocket



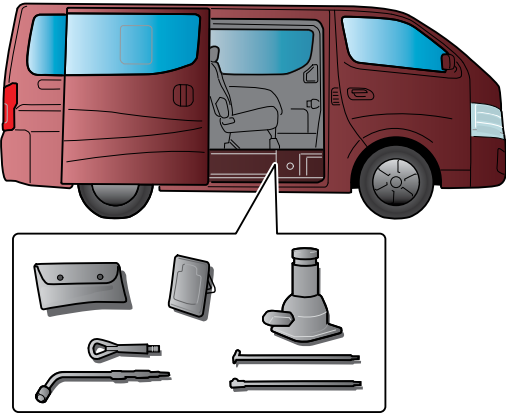
Cup holder (front)



Ticket holder (sunvisor)

## IN CASE OF EMERGENCY

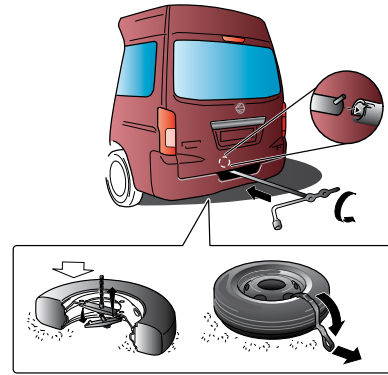
### Location of jack and tools



The necessary jack and tools to change a tyre are stored inside the sliding door step as illustrated.

## Spare wheel recovery

To recover the spare wheel from underneath the vehicle, follow the four steps as outlined below:



1. Insert the T-shaped rod into the oval opening above the middle of the rear bumper and direct it towards the spare wheel winch assembly.
2. Insert the rod into the T-shaped opening on the spare wheel winch and turn the rod anticlockwise to lower the spare wheel.
3. Once the spare wheel is completely lowered, pull the strap on the spare tyre to slide the tyre from under the vehicle.
4. Remove the tyre hanger bracket from the spare tyre.

**NOTES:**

**NOTES:**

**NOTES:**



**NOTES:**

**NOTES:**

**NOTES:**



Publication No.: QR14E-0E26A0

Printed in South Africa

Nissan SA (Pty) Ltd

Every effort has been made to ensure that the content of this publication is correct at the time of going to press. (July 2014)  
In accordance with the company's policy of continuously improving its products, Nissan reserves the right to change at any time the specifications of the vehicles described and shown in this publication without notice.